

you can
Canon Inkjet Printers & All-in-Ones



My prints, my way

PIXMA printers and All-in-Ones are *made* for photos. Fast, lab-quality prints right at your fingertips. PIXMA lets you re-discover the memories hibernating on your hard drive and print them with ease in flawless detail.

1 START ON THE INSIDE

Inside All-in-One PIXMA printers lie generations of Canon innovations in print head, image capture and precision media-handling technology. The PIXMA advantage in quality and speed begins with FINE print heads – Canon’s exclusive Full-photolithography Inkjet Nozzle Engineering. In lay terms, that means the print head with thousands of microscopic nozzles fire off millions of tiny droplets every second with pinpoint accuracy. Microscopic nozzles mean we can pack thousands of them onto the print head, giving you ultra-fast print speed with absolutely no compromise on quality.

2 ADD STYLE... AND SUBSTANCE

Across the entire range, PIXMA has never looked better. Eye-catching contemporary design complements the latest Canon features and functions. On selected models, Canon’s Easy-Scroll Wheel redefines how you use your PIXMA, providing intuitive control over advanced print, scan and copy tools. For professional photo and fine art printing, the PIXMA Pro series sets a new benchmark at A3+ size.

3 SET YOURSELF FREE

Direct printing on selected models means you don’t even need a computer. Print straight from a digital camera, camera phone or PDA via PictBridge, memory card slots, IrDA and optional Bluetooth® functionality. Colour screens, stand-alone controls and image-editing software give you maximum control for direct photo printing.

4 DARE TO BE DIFFERENT

Who says photos have to sit in frames? Try printing your own T-shirt design. Or a giant tiled wall poster. Or unique photo business cards. For a whole slew of creative printing ideas visit My Way, our online guide to getting the most out of your PIXMA.

www.canon-europe.com/pixma

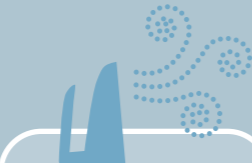
DESIGN YOUR OWN T-SHIRT



1 **Capture** the perfect image. Zoom, crop and enhance as you like.



2 **Print** your personal manifesto directly onto a Canon T-shirt Transfer.



3 Pick a cotton T-shirt, heat up your iron and **transfer** your image. Be sure to follow the instructions.



For a free sample photo print: www.yourprint.canon-europe.com

PIXMA Technology

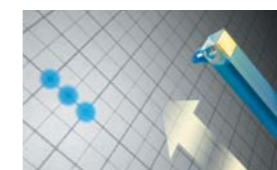
Exceptional print speeds, superb quality, eye-catching designs. The familiar hallmarks of every PIXMA is carried forward by a fourth generation of PIXMA which introduces a range of new innovations that take photo lab quality to the next level.

FINE SUPERB PHOTO LAB QUALITY

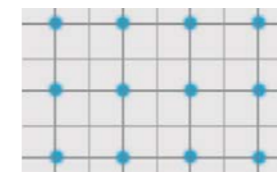
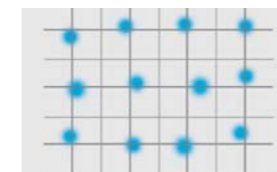
The unique FINE print head uses Micro-Nozzles to eject microscopic ink droplets with pinpoint precision. Unlike other printers, a single pass achieves superb colour accuracy and clarity at speed.



Conventional / Competitors



Canon's FINE Technology™



LEADING TECHNOLOGY

Great prints capture all the colour and detail of a scene. PIXMA printers are able to deliver beautifully detailed prints – up to an incredible 9600 dpi – thanks to market-leading print-head and ink-delivery technologies. Specially designed Micro-Nozzles as small as 9 microns in diameter firing drops as small as 1pl ink onto the page with absolute precision and amazing consistency.

ChromaLife100 HIGH CONTRAST – FOR 100 YEARS

ChromaLife100 is a system of specially formulated inks, FINE print heads and genuine photo papers. While memories may fade, ChromaLife100 images will look their best for 100 years¹. Selected PIXMA products also come with Canon’s ContrastPLUS² – dye-based black ink adds contrast to photos and pigment ink results in sharper, clearer text.

THE PIXMA STANDARD

Offering beautiful photo prints in as little as 21 seconds, PIXMA stands for speed and quality. Constant improvements in performance are matched by an even better, easier user experience. On selected models, the Easy-Scroll Wheel brings a new level of simple, intuitive control to your printing.

EFFICIENT INK SYSTEMS

Printers utilising Canon’s Single Ink tank system optimise printing efficiency. To minimise wastage, each ink colour has its own individually replaceable tank. An LED light integrated into the tank flashes when a colour is running low. Alternatively, printers utilising Canon’s FINE Cartridge system combine inks and print head in one, easily replaceable unit to optimise convenience and simplicity.

¹ When stored in a photo album. See www.canon-europe.com/chromalife100 for more details
² PIXMA MP970, PIXMA MP610, PIXMA MP600R, PIXMA iP4500 and PIXMA MP830

AUTO IMAGE FIX

Not every dark or fuzzy image is the same. PIXMA technology knows that you don’t treat a portrait the same as a landscape or a night scene – and it has the intelligence to know the difference. Auto Image Fix starts by analysing and categorising your photo. Once it has determined what it is looking at, it applies the optimum set of corrections for that image type. For example, if a face is detected, PIXMA corrects skin tone and brightness. For scenery, it works on color fogging, contrast and saturation. It even applies different corrections to different parts of the image. So you get the best results with every print.



Without Auto Image Fix



With Auto Image Fix



Without Auto Image Fix



With Auto Image Fix



TFT screen and Easy-Scroll Wheel

LARGE COLOUR SCREENS

Superior quality colour TFT screens feature on many of the new PIXMA Photo All-in-Ones. Combined with Canon's Easy-Scroll Wheel, previewing images without a computer becomes easy and intuitive. Whether you use the Easy-Scroll Wheel or an operator panel, PIXMA is designed for fast and simple navigation.



ADVANCED COPIER TECHNOLOGY

Photo All-in-Ones offer superior quality copying for photo reprints, graphics and text. Combining two types of colour space recognition, 'Dual Colour Gamut Processing Technology' delivers outstanding results for the most complex and detailed of images.



DVD/CD printing

ADVANCED MEDIA HANDLING

High speed ADF (Automatic Document Feeder) is another great time saver and makes copying batch documents a simple task. Auto duplex printing enhances the creative options available by making double sided photo and paper printing easy. Printing directly onto a compatible DVD/CD is a great way to give home movies and photo albums a smart finish.

FAX

For fast, secure transmission, fax-enabled PIXMA All-in-Ones incorporate a Super G3 33.6 kbps fax - capable of ripping through large documents at just 3 seconds per page¹.

¹ See specifications

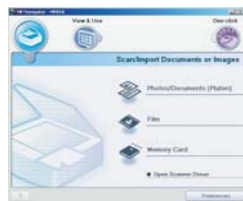


NETWORKING

With built-in wired and wireless networking, select PIXMA printers and All-in-Ones provide the flexibility of document/photo printing and scanning across a wired or wireless network. However using a silix print server, such as the C-6700WG, that has been specifically designed to work with Canon printers, the entire range of PIXMA printers can work in an existing wired or wireless network.

IrDA & BLUETOOTH® - WIRELESS PHOTO PRINTING

For printing freedom, selected PIXMAs feature IrDA and optional Bluetooth® functionality to print from mobile phones, PDAs and PCs. No cables. No fuss.



MP Navigator EX

EASY-TO-USE SOFTWARE

All PIXMA All-in-Ones and inkjet printers are supplied with an advanced suite of software in the box. On PIXMA All-in-Ones, MP Navigator EX software guides you step by step through each function. Select the process (e.g. scan, import from memory card), then select the output; e.g. Photo print, attach to email, save as PDF. Simply perfect results - every time. You can use Easy-PhotoPrint EX with all PIXMA's to create borderless photos in three easy steps.

At home with PIXMA

Whether you're scanning or printing photos, copying or faxing documents, PIXMA Photo Printers and All-in-Ones handle the job with ease, to make your life easier.

PHOTOS COME TO LIFE

PIXMA gets precious memories off the screen and into your hands. And you're not restricted to simple photo prints. Canon produces a full range of papers and specialty media for use with your PIXMA - from stickers and t-shirt transfers to printable CDs/DVDs and photo album kits.

BUSINESS AS USUAL

The simple addition of a PIXMA All-in-One can transform your desktop into a mini home office. Copy and save important correspondence. Scan papers and family photos. Send and receive faxes. Not to mention premium quality photo and document printing. With PIXMA in your home, you're ready for anything.

MAKING THE LINK

PIXMA's connectivity options are designed to give premium results without the hassle. Direct printing lets you print photos straight from the camera, with image editing on the printer's LCD screen. Wireless IrDA and optional Bluetooth® mean you don't even need a cable to print from mobile phones, PDAs and laptops.

From stylish design to user-friendly technology, PIXMA will be right at home in your home.

"I take colour seriously."

John Boom is a photo editor. He demands quality - and he gets it from a PIXMA MP600R. "I'm spoiled. I work with professional photos all day long. At home, I need a printer that can live up to my high expectations. The PIXMA MP600R gives me the kind of quality I'm used to."



Home All-in-One Printers



PIXMA MP970

This top-of-the-range Photo All-in-One is dedicated to digital and analogue camera users. Print from a range of sources or digitise your 35mm film. A palette of seven inks delivers ultimate quality colour photo prints you can show off, anywhere.

- Photo printing – 1pl ink droplets; up to 9600 x 2400 dpi*; 4" x 6" borderless photo in approx. 35 sec.*; print from PC, memory cards, digital cameras & mobile phones
- Document printing – Mono and colour; up to 30/22ppm
- Copying – Mono and colour; up to 30/22cpm
- (Film) scanning – 4800 dpi; adapter for 35mm slides & film
- Print on CD and DVD – Personalise discs
- Photo re-printing – Duplicate existing photo prints
- Interface – 8.8cm colour TFT display; Easy-Scroll Wheel
- Single Ink – 7 ink tanks
- Efficient – Double-sided printing & copying; two paper trays; Quick-Start
- Photo enhancement – Auto-Image Fix; image editing software

* See specifications



PIXMA MP610

This premium Photo All-in-One is ideal for digital camera owners demanding extensive printing capabilities. It's brimming with features and delivers superior quality prints, so you're only limited by your imagination.

- Photo printing – 1pl droplets; up to 9600 x 2400 dpi*; 4" x 6" borderless photo in approx. 21 sec.*; print from PC, memory cards, digital cameras & mobile phones
- Document printing – Mono/colour; up to 31/24ppm
- Copying – Mono/colour; up to 31/24cpm
- Scanning – 4800 dpi; straight to pdf, e-mail or PC
- Print on CD and DVD – Personalise your discs
- Photo re-printing – Duplicate existing photo prints
- Interface – 6.2cm colour TFT display; Easy-Scroll Wheel
- Single Ink – 5 ink tanks
- Efficient – Double-sided printing & copying; two paper trays; Quick-Start
- Photo enhancement – Auto-Image Fix; image editing software

* See specifications



PIXMA MP600R

Designed for home networking, the PIXMA MP600R lets the whole family share the functionalities of this advanced Photo All-in-One. Print photos, copy and scan effortlessly, thanks to the friendly Easy-Scroll Wheel interface and the 6.2cm colour TFT screen.

- Wireless 802.11(g/b) & wired (Ethernet) network connectivity
- 6.2cm colour TFT screen and Easy-Scroll Wheel
- Photo printing – 1pl droplets; up to 9600* x 2400 dpi, FINE print head, 1pl Micro-Nozzles, ContrastPLUS
- Photo lab quality 4" x 6" borderless photo in approx. 28 seconds*
- ChromaLife100 for long-lasting, beautiful photos*
- Direct photo printing from PictBridge compatible cameras, memory cards* & mobile phones (via IrDA interface or optional Bluetooth® Unit)
- 2400 x 4800 dpi scanner
- Economical Single Inks
- Two paper trays, integrated duplex unit, DVD/CD printing
- Windows & Mac OS X compatible*
- USB2.0 Hi-Speed

* See specifications



PIXMA MP520

This mid-range Photo All-in-One is the logical choice for many. It is packed with functionalities for photo & document printing: two paper trays, Easy-Scroll Wheel and 4 Single Ink tanks. Overall a great, multi-purpose tool for the entire family.

- Photo printing – 2pl ink droplets; up to 4800 x 1200 dpi*; 4" x 6" borderless photo in approx. 46 sec.*; print from PC, memory cards and digital cameras
- Document printing – Mono and colour; up to 30/20ppm
- Copying – Mono and colour; up to 30/20cpm
- Scanning – 2400 dpi; straight to PDF, e-mail or PC
- Photo re-printing – Duplicate your existing photo prints
- Interface – 5.0cm colour TFT display; Easy-Scroll Wheel
- Single Ink – 4 ink tanks
- Efficient – Two paper trays; Quick-Start
- Photo enhancement – Auto-Image Fix; image editing software

* See specifications



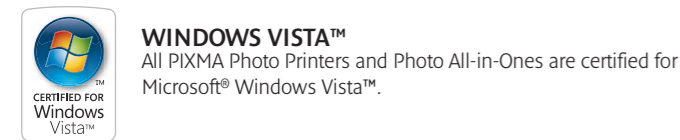
Mighty FINE photos and more

Micro-nozzles make the difference for high-resolution, grain-free prints in the PIXMA MP520.

Canon's FINE print head technology uses micro-nozzles to produce tiny ink droplets just 2pl in size, smaller than comparably priced All-in-Ones. The result is photo-lab quality, borderless prints at resolutions up to 4800 x 1200 dpi.

PIXMA MP520 is the first All-in-One in the PIXMA range to feature Canon's Single Ink system. To minimize waste, four colour inks have their own tanks, which are replaced separately as necessary.

Easy Scroll Wheel and colour TFT screen make viewing and editing your photos a simple pleasure.





PIXMA MP220

This standard Photo All-in-One is ideal if you want to print, copy, and scan at home. Adding ease-of-use, the two-line LCD display allows you to print from your memory card without a PC, so you will be holding your photo prints in seconds.

- Photo printing – 2pl ink droplets; up to 4800 x 1200 dpi*; 4" x 6" borderless photo in approx. 46 sec.*; print from PC, memory cards and digital cameras
- Document printing – Mono and colour; up to 22/17ppm
- Copying – Mono and colour; up to 22/17cpm
- Scanning – 1200 dpi; straight to PDF, e-mail or PC
- Photo re-printing – Duplicate your existing photo prints
- Interface – Two-line LCD display
- Efficient – Quick-Start for fast start-up and instant use of functions
- Photo enhancement – Auto-Image Fix; image editing software

* See specifications



PIXMA MP210

This standard Photo All-in-One is great for all who want quality printing, scanning and copying in their home, at a highly affordable price. A perfect tool for schoolwork and personal administration – and beautiful photo prints too.

- Photo printing – 2pl ink droplets; up to 4800 x 1200 dpi*; 4" x 6" borderless photo in approx. 46 sec.*; print from PC and digital cameras
- Document printing – Mono and colour; up to 22/17ppm
- Copying – Mono and colour; up to 22/17cpm
- Scanning – 600 dpi; straight to PDF, e-mail or PC
- Photo re-printing – Duplicate your existing photo prints
- Efficient – Quick-Start for fast start-up and instant use of functions
- Photo enhancement – Auto-Image Fix; image editing software

* See specifications



Rodolfo Benitez – 'Flamenco'

Home Printers



PIXMA iP4500

This premium Photo & Document Printer will delight digital camera owners seeking extra functionality and quality at an unbeatable price. Print what you want, how you want – at high speed and with exceptional results.

- Photo printing – 1pl ink droplets; up to 9600 x 2400 dpi*; 4" x 6" borderless photo in approx. 21 sec.*; print from PC and digital cameras
- Document printing – Mono and colour; up to 31/24ppm
- Print on CD and DVD – Personalise your discs
- Single Ink – 5 ink tanks, minimising ink wastage
- Efficient – Double-sided printing; two paper trays
- Photo enhancement – Auto-Image Fix; image editing software

* See specifications



A new star on the horizon

The affordable new PIXMA iP4500 proves that high speed plus high quality doesn't equal high price.

Now you can get 4" x 6", grain-free, lab-quality photo prints right in the palm of your hand in just 21 seconds – with no stress on yourself or your budget. Advanced Media Handling and Canon's Single Ink system make all your printing – even double-sided pages and printing directly onto CDs – smooth, efficient and cost effective.



PIXMA iP3500

This mid-range Photo & Document Printer is all about value for money. Not only do you get quality prints at high speed, but with the Single Ink system you only replace the empty ink tank – minimising both ink and money wastage.

- Photo printing – 2pl ink droplets; up to 4800 x 1200 dpi*; 4" x 6" borderless photo in approx. 47 sec.*; print from PC and digital cameras
- Document printing – Mono and colour; up to 25/17ppm
- Single Ink – 4 ink tanks, minimising ink wastage
- Efficient – Two paper trays
- Photo enhancement – Auto-Image Fix; image editing software

* See specifications





PIXMA iP2500

Whether for fast photo lab quality prints or sharp text, this elegant and eye-catching PIXMA printer gives you photo-lab quality in the home. To kick-start your creativity, the PIXMA iP2500 comes with a Creative CD and a pack of photo paper!

- Fast: Prints a photo lab quality 4" x 6" borderless photo in approx. 55 seconds in Standard mode*
- Fast document printing: up to 22ppm mono, up to 17ppm colour with sharp, crisp black text
- Creative Edition: includes Creative CD + Canon Matte Photo Paper
- Photo lab quality output: max. 4800 x 1200 dpi* resolution using FINE Cartridge & 2pl Micro-Nozzles
- ChromaLife100 system for long-lasting, beautiful photos*
- Rapid borderless photo printing up to A4 size
- Range of easy-to-use software including Easy-PhotoPrint & Easy-LayoutPrint
- Elegant, eye-catching design
- Windows & Mac compatible*; USB connectivity

*See specifications



PIXMA iP1800

Enjoy high quality photo printing at an affordable price with the stylish PIXMA iP1800. Print borderless photos right up to A4 size with ease. Also print documents and schoolwork with sharp, crisp text, fast and efficiently – as well as perfect web text pages.

- Photo lab quality: max. 4800 x 1200 dpi* resolution using FINE Cartridge and 2pl Micro-Nozzles
- Fast: prints a photo lab quality 4" x 6" borderless photo in approx. 70 seconds in Standard mode*
- Fast document printing: up to 20ppm mono, up to 16ppm colour
- Black ink cartridge for printing sharp text documents
- ChromaLife100 system for long-lasting, beautiful photos*
- Rapid borderless photo printing up to A4 size
- Range of easy-to-use software including Easy-PhotoPrint & Easy-LayoutPrint
- Stylish, elegant design
- Windows & Mac compatible*; USB connectivity

*See specifications

PIXMA gets down to business

The PIXMA range extends far beyond home photo printing. PIXMA Office All-in-Ones and Professional Printers give small offices and pro studios the edge on the competition.

THE INTEGRATED ANSWER

Integrated, high-speed printing, scanning, copying and faxing make our Office All-in-Ones the ideal solution for any home office. The same technology that produces premium PIXMA photo prints brings new life and razor-sharp colour to business documents and presentations.

SPEED IT UP

Automatic document feeding saves time and makes handling large documents as easy as a single page. Super G3 faxing rips through documents at a mere 3 seconds per page, with up to 100 coded speed dials. Printing and copying can run as fast as 24 pages per minute in colour and 30 pages per minute in black and white.

WIRED OR WIRELESS

Selected PIXMAs are designed to integrate seamlessly with your network, whether wired or wireless. With the help of an optional print server, absolutely any PIXMA fits in to office networks. Selected PIXMAs also feature IrDA and optional Bluetooth® adapters to print direct from mobile phones, PDAs or laptops.

HANDLING IT LIKE A PRO

PIXMA iX and Pro Series printers produce PIXMA-quality prints in sizes up to A3+. Perfect for businesses and professional studios, the iX Series handles large-format designs just as easily as overgrown spreadsheets. The Pro Series is designed to satisfy the most demanding photo professionals. Flat paper paths allow for A3+ printing on the heaviest photographic and fine-art media.



Jay Dykes – 'Smidgin'



“It’s always up to the job.”

As an advertising art director, Chris Barton has an eye for detail. The PIXMA Pro9500 shows him what he needs to see. “When you’re on a deadline, you can’t always wait for lab prints. I need sharp, accurate reproduction to make judgements and get the job done. With PIXMA, I can get to work immediately, right in the studio.”

Office All-in-One Printers



PIXMA MP830

Get all you need for home office productivity in one compact, premium multifunctional. Make the most of high speed colour printing, faxing, copying and scanning – plus direct photo lab quality printing from digital cameras and memory cards.

- High print speed: up to 30ppm mono, 24ppm colour and a 4" x 6" borderless photo in approx. 36 seconds in Standard mode*
- High copy speed: up to 29cpm mono, 24cpm colour
- Super G3 Fax: 100 coded speed dials, 250-page* fax memory
- 35-page duplex Automatic Document Feeder, integrated duplex unit, two paper trays, DVD/CD printing
- Superior print quality: max. 9600* x 2400 dpi, with FINE, Micro-Nozzles, 1pl ink droplets & ContrastPLUS
- ChromaLife100 for long-lasting, beautiful photos*
- Direct photo printing from memory cards* via a 6.2cm colour LCD viewer & PictBridge-ready
- 2400 dpi scanner
- Efficient Single Ink system
- USB2.0 Hi-Speed

* See specifications



PIXMA MX700

This premium Fax & Photo All-in-One offers small office users a great business tool. Share the productive fax, print and copy functionalities over an Ethernet network to save time and money – and you can focus on making your business a success.

- Faxing – Super G3 speed; 40 coded speed dials; 100-page* fax memory
- Office efficiency – 30-page Automatic Document Feeder; Quick-Start
- Document printing – Mono and colour; up to 30/20ppm
- Copying – Mono and colour; up to 30/20cpm
- Scanning – 2400 dpi; straight to PDF, e-mail or PC
- Photo printing – 2pl ink droplets; up to 4800 x 1200 dpi*; 4" x 6" borderless photo in approx. 46 sec.*
- Interface – 4.5cm colour LCD display
- Single Ink – 4 ink tanks
- Connectivity – Ready to integrate into Ethernet network
- Optical Character Recognition software – Re-digitise printed text documents

* See specifications



PIXMA MX310

This mid-range Fax & Photo All-in-One was designed for people demanding more productivity on a daily basis, but without the huge budget. If you're ready to get serious, this is your PIXMA.

- Faxing – Super G3 speed; 20 coded speed dials; 50-page* fax memory
- Office efficiency – 30-page Automatic Document Feeder, Quick-Start
- Document printing – Mono and colour; up to 22/17ppm
- Copying – Mono and colour; up to 22/17cpm
- Scanning – 1200 dpi; straight to PDF, e-mail or PC
- Photo printing – 2pl ink droplets, up to 4800 x 1200 dpi*; 4" x 6" borderless photo in approx. 46 sec.*
- Optical Character Recognition software – Re-digitise printed text documents

* See specifications



Quick from start to finish

The four-in-one PIXMA MX310 guarantees speed on top of convenience.

Quick start gets you going in an instant. High-speed printing – up to 22ppm mono – keeps you going. Print, copy, scan and fax – the PIXMA MX310 is the fast, compact solution for any home office.

Large documents? An automatic document feeder with 30-page capacity makes quick, easy work of scanning or copying. Add in Super G3 fax capability to send faxes as quick as 3 seconds per page and you've got a speedy four-in-one answer to your home office needs.

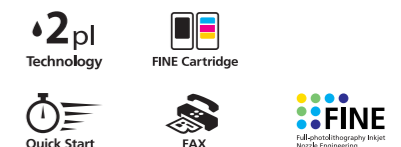


PIXMA MX300

This standard Fax & Photo All-in-One is ideal for everyone who works from home. Stay fully productive with the fax and print/scan/copy functions – and all at a low price.

- Faxing – Super G3 speed; 20 coded speed dials; 50-page* fax memory
- Office efficiency - Quick-Start for fast start and use of functions
- Document printing – Mono and colour; up to 22/17ppm
- Copying – Mono and colour; up to 22/17cpm
- Scanning – 600 dpi; straight to PDF, e-mail or PC
- Photo printing – 2pl ink droplets; up to 4800 x 1200 dpi*; 4" x 6" borderless photo in approx. 46 sec.*
- Optical Character Recognition software – Re-digitise printed text documents

* See specifications



Rodolfo Benítez - 'Pumpkins'

Accessories




PIXMA iP90v


Get high performance photo printing on the move with this stylish, portable photo printer – available with or without the LK-51B Rechargeable Battery and Charger Kit available in the box. Print direct from compatible camera phones, digital cameras and your PC with IrDA, PictBridge and optional Bluetooth® connectivity.

- Incredibly powerful and compact, portable inkjet photo printer
- Up to 4800 x 1200* dpi FINE print head with 2pl Micro-Nozzles
- Up to 16 ppm mono and 12 ppm colour document printing
- Wireless printing from compatible camera phones, PDAs, PCs & digital cameras (IrDA & optional Bluetooth®)*
- Direct PictBridge printing
- Fast borderless printing up to A4 size
- ChromaLife100 for long-lasting, beautiful photos
- Rechargeable Battery and Charger (LK-51B) included, optional Battery/Cradle kit (CK-51B), optional car adapter
- Windows & Mac compatible*

* See specifications



Bluetooth® Unit BU-20
Bluetooth® Unit for the Pixma MP970, PIXMA MP610, MP600R and Pixma MP520. Provides support for wireless printing from Bluetooth® wireless technology enabled camera phones, PC's and PDA's.



Silex C-6700WG
Share your Canon PIXMA printer or All-in-One wirelessly using the silex C-6700WG print server. Easy to set up, the silex C-6700WG means you can share printing at the same time and print or scan from almost anywhere in the house.

PIXMA iP90v accessories



BU-10
The Bluetooth® Unit BU-10 provides the PIXMA iP90v with support for wireless printing from Bluetooth® wireless technology enabled camera phones, PC's and PDA's.



LK-51B
The rechargeable Li-ion battery and charger kit allows you to print on the move. The battery prints up to 450 pages on a single charge and also includes a charge level indicator, so you always know how much power you have left.



CK-51B
The rechargeable battery and cradle kit includes a charging cradle as well as the Li-ion battery and charger. The cradle is convenient, easy to use and saves space when charging.



PU-100U
The Automobile Power Unit allows you to charge the optional battery or run the printer from your car's cigarette lighter socket.



Marcel de Waal – 'Yellow Boots'



Mick van der Linden – 'Lighthouse Texel'



PIXMA iX5000

The PIXMA iX5000 brings advanced A3+ printing to home and small office users. Get high speed, high-quality output for your documents and graphics – or print big borderless photos direct from digital cameras – with this robust, reliable, easy-to-use printer.

- Superior print speed: up to 25ppm mono & 17ppm colour (A4)
- A3+ photo lab quality print in approx. 166 seconds in Standard mode*
- Photo lab quality using FINE Print head with Micro-Nozzles ejecting 2 pl droplets giving a maximum 4800* x 1200 dpi print resolution
- Sharp and crisp text printing with rich and vibrant colour graphics
- ChromaLife100 system for long-lasting, beautiful photos*
- Transparent Single Ink system
- PictBridge-ready for direct photo printing from digital cameras
- 150-sheet Auto Sheet Feeder
- Windows & Mac OS X compatible*; USB2.0 Hi-Speed
- Robust design

* See specifications



PIXMA iX4000

The PIXMA iX4000 offers affordable A3+ printing for high-speed, high quality output of all your photos, documents and graphics. Canon's ChromaLife100 system guarantees long-lasting prints* plus the transparent Single Ink system ensures added economy.

- High speed printing: up to 18ppm mono & 14ppm colour (A4)
- A3+ photo lab quality print in approx. 166 seconds in Standard mode*
- Photo lab quality using FINE Print head with Micro-Nozzles ejecting 2 pl droplets giving a maximum 4800* x 1200 dpi print resolution
- Sharp and crisp text printing with rich and vibrant colour graphics
- ChromaLife100 system for long-lasting, beautiful photos*
- Transparent Single Ink system
- PictBridge-ready for direct photo printing from digital cameras
- 150-sheet Auto Sheet Feeder
- Windows & Mac OS X compatible*; USB2.0 Hi-Speed
- Robust design

* See specifications

Professional Printers



PIXMA Pro9500

This professional quality 10-colour, A3+ photo printer uses pigment inks to deliver studio quality photo output for colour and monochrome prints. Benefit from exceptional image permanence, support for speciality photo and fine art papers and full colour control.

- 10-colour pigment ink, A3+ photo printer for professionals
- Exceptional image permanence with pigment inks for all 10 colours
- Professional quality neutral monochrome prints with Photo Black, Matte Black and Grey inks
- Supports a wide range of high quality photo & fine art papers
- Flat paper feed path for heavy weight print media
- Adobe® Photoshop® CS/CS2 plug-in software for professional colour control
- Maximum 4800* x 2400 dpi with FINE print head and 3pl Micro-Nozzles
- Robust and stylish design

* See specifications



PIXMA Pro9000

Designed for true professional photo printing, the PIXMA Pro9000 offers outstanding 8-colour, A3+ output with complete colour control. Support for photo and fine art papers is complemented by Canon's ChromaLife100 system for long-lasting, beautiful photos.

- Professional 8-colour A3+ photo printer for outstanding photo quality
- ChromaLife100 system for long-lasting, beautiful photos*
- Supports a wide range of high quality photo & fine art papers
- A3+ Photo lab quality print in approx. 83 seconds*
- Adobe® Photoshop® CS/CS2 plug-in software for professional colour control
- Flat paper feed path for heavy weight print media
- DVD/CD-R printing
- Single Ink system
- Maximum 4800* x 2400 dpi with FINE print head & 2pl Micro-Nozzles

* See specifications



Steven Kordic – 'Templum Saturni'

Genuine Canon Inks & Photo Paper

In order to obtain outstanding photo quality from its PIXMA printers and All-in-Ones, Canon has developed highly functional inks and high performance print media to match.



Faded image¹

ChromaLife100 image¹

QUALITY THAT LASTS

ChromaLife100, used on almost all our printers, is at the heart of PIXMA. The system combines genuine dye-based inks, genuine papers and the FINE print head to deliver brilliant true-to-life images that stay sharp for up to 100 years². The flagship PIXMA Pro9500 uses special formulation 'LUCIA' pigment ink for exceptional image permanence. Pigment ink is considered the industry standard for commercial output.

MICROSCOPIC INK DROPLETS

Printer inks must remain stable during operation, when they are instantaneously heated to high temperatures. They must be capable of forming microscopic ink droplets – in some cases more than two million times smaller than a raindrop – without clogging the ultra fine ink nozzles. Moreover, they must retain a perfect spherical shape when expelled so that they are always placed on the paper with accuracy and precision. The result is great photos with smooth colour gradations and perfect detail.

CANON GENUINE INKS

To develop inks that work efficiently with FINE microscopic nozzles, and act in harmony with genuine photo paper, Canon has drawn on its knowledge of inorganic, organic and high polymer chemistry to create special inks. These new inks are engineered to minimise the impact on prints of light and gases in the air, thereby increasing image longevity. As with all Canon products, inks are manufactured to stringent safety standards.

CANON GENUINE PHOTO PAPERS

Regardless of how advanced an inkjet printer might be, getting optimal results relies on using high quality media. Canon applies advanced materials science expertise and manufacturing techniques to create a range of media types, such as Matte, Glossy and Fine Art, in a wide variety of sizes; from credit card to 14" x 17" and A3+.

On its Photo Paper Pro PR-101, Canon uses a high quality alumina ink absorption layer for increased glossiness, outstanding image sharpness and clarity. Fast ink absorption prevents ink 'bleed' and improves tonal depth and image intensity. A special coating inhibits colour fading due to the effects of airborne gases such as ozone. Improved image permanence with the ChromaLife100 system is achieved by using a combination of Canon's genuine photo paper and compliant inks with Canon's FINE print head technology.

¹ The fading effects are simulated for illustration purposes.

² When stored in a photo album. See www.canon-europe.com/chromalife100/



Anna Kuitems – 'Bright Surprise'



Efficient ink systems

To maximise both efficiency and ease of use, and to meet the changing and ever-increasing diversity of home printing requirements, Canon has developed two complementary ink systems.

SINGLE INK LED SYSTEM

To minimise ink wastage and protect the environment, Canon's Single Ink system uses transparent, individually replaceable single colour ink tanks. Each tank incorporates an LED that flashes slowly to indicate when ink is low, or rapidly when the tank is empty. This is ideal for direct camera and memory card printing as ink levels can be checked even when not using your PC. To ensure hassle-free installation, the LED also indicates when a tank is incorrectly installed. When printing from a PC, a pop-up warning indicates when an ink tank is low or empty.

FINE CARTRIDGES

Canon's one-click installation FINE Cartridges could not be more simple to replace. By combining both print head and ink tank, they also allow extremely compact designs so your PIXMA has a stylish and slim line shape. And because the print head is replaced with the ink, superb photo quality with fast print speeds are assured.

CHROMALIFE100

A critical property of any photo print is longevity: how long will the photo look good before fading? PIXMA's core printers and All-in-Ones now feature ChromaLife100 – a system of inks and photo papers developed by Canon and specifically designed to work in concert with the FINE print heads¹ to keep images rich, vibrant and fresh for generations. The three key elements of nozzle design, ink and media produces prints rivalling silver halide for quality and longevity.



Prints resist fading for 100² years when album-stored, 30³ years when displayed under glass and 10 years⁴ when exposed to light and the atmosphere. Used in conjunction with glossy media, ChromaLife100 dye based inks produce long lasting rich colours.

¹ See section 'FINE print head technology' on page 97
² Applies when using PR-101, PP-101, SG-101/SG-201, GP-401, GP-501 print media and CLI-8 series, CL-38/CL-41/CL-51/CL-52, CLI-36 Colour and BCI-16 Colour cartridges
³ Applies when using PR-101 or PP-101 print media and CLI-8 series, CL-38/CL-41/CL-51/CL-52, CLI-36 Colour and BCI-16 Colour cartridges
⁴ Applies when using PR-101 print media and CLI-8 series, CL-38/CL-41/CL-51/CL-52, CLI-36 Colour and BCI-16 Colour cartridges



Marc Schultz - 'Time Passages'



Inkjet Printers & All-in-Ones

HIGH PERFORMANCE INKS

Whether it's Canon's economical Single Ink system or the convenient FINE Cartridge, Canon inks are formulated to deliver outstanding results every time. Precious memories that last for more than a lifetime.

It's the combination of Canon's unique FINE print head and high quality papers with high performance ink that delivers vivid and vibrant photographs bursting to life with colour. Using genuine ink ensures outstanding print longevity and allows PIXMA printers to perform to their full potential. New developments in ink manufacture mean that fourth generation PIXMA has moved even further ahead.

PIGMENT INKS

To optimise professional PIXMA Pro9500 performance, Canon has developed special pigment inks. These LUCIA inks provide colour density when used in conjunction with Fine Art media, such as matte and textured surfaces. Trusted by professional photographers for commercial

Mixed according to a special formula by our development team, a remarkable degree of stability is achieved – even when the inks are subjected to the high temperatures and pressures necessary to fire droplets precisely onto the page. Our inks are designed to withstand temperatures of over 300°C. They are formulated to resist the factors that may cause fading, particularly gases in the air such as ozone. Enjoy your memories for years to come.

To ensure the tiny Micro-nozzles of the FINE print head remain clear throughout the product life, our high quality inks are manufactured in a strictly controlled environment free from impurities. By carefully controlling the density of the ink, colours are always vivid, rich and vibrant.

applications, pigment inks also offer exceptional levels of image stability and durability. The PIXMA Pro9500's combination of ten pigment inks produces both vibrant colour and superbly rendered black and white prints.

Paper

Canon paper allows Canon printers to produce optimal results.

PHOTO PAPERS



PR-101 ChromaLife100
4" x 6", A4, A3, A3+,
8" x 7" (Wide)
8" x 10", 10" x 12",
14" x 17"

Photo Paper Pro
Canon's flagship professional photo paper offers the highest quality digital photographic output, with a mirror smooth gloss finish. Prints are virtually indistinguishable from traditional silver halide photographs. This paper offers exceptional print durability and the fastest photo printing speeds.



PP-101 ChromaLife100
4" x 6", A4, A3, A3+

Photo Paper Plus Glossy
Canon's standard high-quality heavyweight photo paper offers superior quality output with a glossy finish. Create your own digital photographs and reprints at home.



SG-201 ChromaLife100
4" x 6", A4, A3, A3+,
8" x 10", 10" x 12",
14" x 17"

Photo Paper Plus Semi-gloss
This satin finish paper offers increased thickness and weight and has the texture of real photographic paper. Ideal for producing outstanding landscape photographs or wedding photographs with a professional touch.



GP-401 ChromaLife100
2" x 3.5" (credit card),
4" x 6", A4, A3, A3+

Glossy Photo Paper
Glossy Photo Paper offers sharp, bright colours for photographic reproduction. Ideal for digital photos and reprints.



GP-501 ChromaLife100
4" x 6", A4

Glossy Photo Paper "Everyday Use"
Economical, glossy paper for everyday affordable prints. Ideal for sharing digital photos.



PP-101D
5" x 7", A4

Photo Paper Plus Double Sided
Fine textured, satin finish photo paper. This premium heavyweight resin coated paper is printable on both sides, ideal for binding into albums. A high quality Photo Album Kit is also available for you to make your own photo albums or digital scrapbooks.



MP-101
A4, A3

Matte Photo Paper
Matte Photo Paper produces high quality photographs, graphics and text with a matte finish. Also suitable for more creative uses, such as greeting cards and displays.



PAK-101
5" x 7", A4

Photo Album Kit
The Photo Album Kit contains everything you need to create your own personalised digital photo album.



HR-101N
A4, A3

High-Resolution Paper
This coated paper is designed to produce brilliant colours. For sharp, vivid photographs and graphic images.



SW-201
A4

Super White Paper
Super white uncoated plain paper, printable on both sides.

INK & MEDIA VALUE PACKS

Value Pack bundles are available at a price that is lower than purchasing these items separately. Containing a combination of ink and up to 100 sheets of photo paper, these packs represent convenience, value and photo printing freedom.



CL-41/CLI-36 ChromaLife Pack
This convenient economy pack is the perfect introduction to affordable printing from €0.25/22p* per photo. Contains CL-41/CLI-36 FINE Cartridge and 100 sheets Glossy Photo Paper "Everyday Use" GP-501 (4" x 6")

* Estimated price based on Canon's RRP/RSP including tax.



CLI-8 ChromaLife Pack
This value pack offers significant savings, bundling 4 premium CLI-8 ink tanks (BK/C/M/Y) and 50 sheets of high quality, high gloss media (Photo Paper Plus Glossy PP-101 (4" x 6")).

FINE ART MEDIA

For the ultimate expression of your photographic and artistic voice, Canon's richly textured Fine Art papers give a premium feel to those extra special prints. With different finishes and a range of sizes to A3+, this gallery-quality media range is developed with professional creativity in mind, and recommended for use with PIXMA Pro.



FA-ME1
A4, A3, A3+

Fine Art Paper "Museum Etching"
A natural white, 100% cotton rag paper supplied by Hahnemühle, with the texture of traditional art paper. Ideal for discerning digital artists, galleries and museums.



FA-PR1
A4, A3, A3+

Fine Art Paper "Photo Rag"
Photo Rag™ is a smooth, bright white 100% cotton rag based paper with a soft, velvet texture. Suitable for high quality digital photographic and fine art reproduction.

Photo Rag™ is a trademark of Hahnemühle FineArt GmbH



FA-PM1
A4, A3, A3+

Fine Art Paper Premium Matte
A premium heavyweight paper with a smooth, non-glare matte surface. Suitable for many applications including professional quality photographs and computer generated artwork.

SPECIALITY & CREATIVE MEDIA

PIXMA brings fun to photo printing, with a range of creative media to suit every project and application. From stickers and credit card size photo paper for school, work and home to T-shirt transfers and a Photo Album Kit, PIXMA takes your creativity in new directions, helping you get more out of your images.

PS-101
4" x 6"

Photo Stickers
Photo Stickers are a fun way to print photos taken by suitable digital cameras and mobile telephones. Perfect for sticking to envelopes, cards, invitations, etc., or for making your own sticker collection.

TR-301
A4

T-shirt Transfers
Create your own personalised T-shirts, sweatshirts or tablecloths. Design your image on screen, print it directly onto the T-shirt Transfer then simply iron on to any cotton or poly/cotton fabric.

PIXMA Home All-in-One Printers Specifications Chart



	PIXMA MP970	PIXMA MP610
Available Functions	Print, Scan & Copy, Camera, Memory Card, 35mm film/slide and Mobile phone direct printing with 8.8cm Colour TFT screen	Print, Scan & Copy, Camera, Memory Card, and Mobile phone direct printing with 6.2cm Colour TFT screen and Easy-Scroll Wheel
PRINTER FUNCTIONS		
Print Resolution	Up to 9600 ¹ x 2400 dpi	Up to 9600 ¹ x 2400 dpi
Print Engine	Inkjet 7-ink with minimum 1 pl Micro-Nozzles, FINE print head and ContrastPLUS	Inkjet 5-ink with minimum 1 pl Micro-Nozzles, FINE print head and ContrastPLUS
Photo Lab Quality Speed	Borderless 4" x 6": Approx. 35 seconds (Standard)	Borderless 4" x 6": Approx. 21 seconds (Standard)
Mono Print Speed	Up to 30 ppm (Max.), 15 ppm (Standard)	Up to 31 ppm (Max.), 14.8 ppm (Standard)
Colour Print Speed	Text & Graphics: Up to 22 ppm (Max.), 9.9 ppm (Standard)	Text & Graphics: Up to 24 ppm (Max.), 11.7 ppm (Standard)
Ink Cartridge Configuration	Single Ink technology - 7 separate ink tanks (PGI-5BK, CLI-8BK, CLI-8C, CLI-8M, CLI-8Y, CLI-8PC, CLI-8PM)	Single Ink technology - 5 separate ink tanks (PGI-5BK, CLI-8BK, CLI-8C, CLI-8M, CLI-8Y)
Media Type	See Media Compatibility Chart on page 117	See Media Compatibility Chart on page 117
Media Input	Rear Tray: Max. 150 sheets Cassette: Max. 150 sheets DVD/CD Tray: 1 printable DVD or CD	Rear Tray: Max. 150 sheets Cassette: Max. 150 sheets DVD/CD Tray: 1 printable DVD or CD
Media Size	Rear Tray: A4, B5, A5, Letter, Legal, Envelopes (DL size or Commercial 10), 4" x 6", 4" x 7", 5" x 7", 8" x 10", Credit Card (2" x 3.5") Cassette: A4, B5, A5, Letter, Envelopes (DL size or Commercial 10), 4" x 6", 4" x 7", 5" x 7", 8" x 10"	Rear Tray: A4, B5, A5, Letter, Legal, Envelopes (DL size or Commercial 10), 4" x 6", 4" x 7", 5" x 7", 8" x 10", Credit Card (2" x 3.5") Cassette: A4, B5, A5, Letter, Envelopes (DL size or Commercial 10), 4" x 6", 4" x 7", 5" x 7", 8" x 10"
Media Weight	Rear Tray/Cassette: 64 to 105 g/m ² and supported Canon special media up to 273 g/m ²	Rear Tray/Cassette: 64 to 105 g/m ² and supported Canon special media up to 273 g/m ²
DVD/CD Printing	Available as standard	Available as standard
Two Sided Printing	Automatically selectable using Photo Paper Plus Double Sided, Super White Paper or plain paper in A4, B5, A5, Letter & 5" x 7" sizes	Automatically selectable using Photo Paper Plus Double Sided, Super White Paper or plain paper in A4, B5, A5, Letter & 13 x 18cm sizes
Borderless Printing	YES (A4, 8" x 10", 5" x 7", 4" x 6" & 2" x 3.5")	YES (A4, 8" x 10", 5" x 7", 4" x 7", 4" x 6" & 2" x 3.5")
Camera Interface and Connectivity	Direct Print Port: Camera direct photo printing from PictBridge compliant digital cameras & camcorders	Direct Print Port: Camera direct photo printing from PictBridge compliant digital cameras & camcorders
Card Direct Printing	CompactFlash®, Microdrive, Memory Stick®, Memory Stick Pro™, SD Memory Card®, MultiMediaCard™, and SDHC Memory Card. xD-PictureCard™, Memory Stick Duo™, Memory Stick PRO Duo™, RS-MMC™, miniSD™ and microSD™	CompactFlash®, Microdrive, Memory Stick®, Memory Stick Pro™, SD Memory Card®, MultiMediaCard™, and SDHC Memory Card. xD-PictureCard™, Memory Stick Duo™, Memory Stick PRO Duo™, RS-MMC™, miniSD™ and microSD™
SCANNER FUNCTIONS		
Scanner Type	Flatbed and FAU, CCD colour scanner	Flatbed CIS colour scanner
Scanner Resolution Optical	Up to 4800 x 9600 dpi	Up to 4800 x 9600 dpi
Scanner Resolution Digital	Up to 19200 x 19200 dpi	Up to 19200 x 19200 dpi
Colour Scanning Depth	48/24 bit (RGB each 16/8 bit) (Film scan 48 bit/48 bit or 24 bit)	48/24 bit (RGB each 16/8 bit)
Half-tone/Greyscale Gradation	48/8 bit (Film scan 48 bit/16 or 8 bit)	16/8 bit
Compatibility	TWAIN/WIA (Windows XP/Windows Vista)	TWAIN/WIA (Windows XP/Windows Vista)
Other Scanner Features	Push-scan, Network scan, Multi-Scan, PDF file creation & editing*, Descreen, Unsharp mask, Stitch Assist*, Photograph corrections (Fading correction, Grain correction, Reduce dust and scratches, Backlight correction, Auto Tone), Gutter Shadow Correction, Text (OCR) * Function with MP Navigator	Push-scan, Multi-Scan, PDF file creation & editing*, Descreen, Unsharp mask, Stitch Assist*, Photograph corrections (Fading correction, Grain correction, Reduce dust and scratches, Backlight correction, Auto Tone), Gutter Shadow Correction, Text (OCR) * Function with MP Navigator
COPIER FUNCTIONS		
Copy Speed Colour Document	Approx. 31 sec. ⁷	Approx. 22 sec. ⁷
Copy Speed Mono	Up to 30cpm	Up to 31cpm
Copy Speed Colour	Up to 22cpm	Up to 24cpm
Multiple Copy	1 to 99 copies	1 to 99 copies
Zoom	25 - 400% in 1% increments and preset ratios	25 - 400% in 1% increments and preset ratios
Other Copy Features	Auto Intensity (AE copy), Manual Intensity Adjustment, Image Repeat copy, Fit-to-page copy, Borderless copy, Sticker copy, 2-on-1 copy, 4-on-1 copy, Frame Erase copy, Trimming/Masking copy, Photo reprint, Face brightener, Fade restoration, Manual colour adjustment (brightness/contrast/hue), Auto Duplex copy, DVD/CD label copy, Film copy	Auto Intensity (AE copy), Manual Intensity Adjustment, Image Repeat copy, Fit-to-page copy, Borderless copy, Sticker copy, 2-on-1 copy, 4-on-1 copy, Frame Erase copy, Trimming/Masking copy, Photo reprint, Face brightener, Fade restoration, Manual colour adjustment (brightness/contrast/hue), Auto Duplex copy, DVD/CD label copy
PC INTERFACE AND SOFTWARE		
Interface Type - PC	USB 2.0 Hi-Speed®, Bluetooth® Ver1.2.2* (with optional Bluetooth® Unit BU-20), Ethernet: IEEE802.3u (100BASE-TX), IEEE802.3 (10BASE-T), 10/100Mbps (auto switchable)	USB 2.0 Hi-Speed®, Bluetooth® Ver1.2.2* (with optional Bluetooth® Unit BU-20)
Interface Type - Mobile Phone/PDA	IrDA 1.2 (JPEG only), Bluetooth® Ver1.2.2* (with optional Bluetooth® unit BU-20) (JPEG only) & Photo printing via PictBridge	IrDA 1.2 (JPEG only), Bluetooth® Ver1.2.2* (with optional Bluetooth® unit BU-20) (JPEG only) & Photo printing via PictBridge
Supported OS	Windows Vista/Windows XP SP1, SP2/Windows 2000 Professional SP2, SP3, SP4 Mac OS X v.10.2.8 - v.10.4	Windows Vista/Windows XP SP1, SP2/Windows 2000 Professional SP2, SP3, SP4 Mac OS X v.10.2.8 - v.10.4
Software Included	MP Navigator EX, Easy-PhotoPrint EX*, ScanSoft OmniPage SE (OCR software), ArcSoft PhotoStudio * EPP EX for Mac: available for download from the Canon web site	MP Navigator EX, Easy-PhotoPrint EX*, ScanSoft OmniPage SE (OCR software) * EPP EX for Mac: available for download from the Canon web site
GENERAL FEATURES		
Dimensions (W x D x H)	471 x 396 x 214mm	450 x 389 x 188mm
Weight	Approx. 11.9kg	Approx. 10.0kg
Power Source	AC 100 - 240V, 50/60Hz	AC 100 - 240V, 50/60Hz
Power Consumption	Standby: Approx. 3.6W (when scanning lamp is off), Off: Approx. 1.0W, Copying: Approx 22W ¹¹	Standby: Approx. 2.5W (when scanning lamp is off), Off: Approx. 1.0W, Copying: Approx 19W ¹¹

PIXMA Home All-in-One Printers Specifications Chart



	PIXMA MP600R	PIXMA MP520
Available Functions	Print, Scan & Copy, Camera, Memory Card, and Mobile phone direct printing with 6.2cm Colour TFT screen and Wireless/Wired networking	Print, Scan & Copy, Camera, Memory Card, and Mobile phone direct printing with 5.0cm Colour TFT screen and Easy-Scroll Wheel
PRINTER FUNCTIONS		
Print Resolution	Up to 9600 ¹ x 2400 dpi	Up to 4800 ² x 1200 dpi
Print Engine	Inkjet 5-ink with minimum 1 pl Micro-Nozzles, FINE print head and ContrastPLUS	Inkjet 4-ink with minimum 2 pl Micro-Nozzles, FINE print head
Photo Lab Quality Speed	Borderless 4" x 6": Approx. 28 seconds (Standard)	Borderless 4" x 6": Approx. 46 seconds (Standard)
Mono Print Speed	Up to 30 ppm (Max.), 14.8 ppm (Standard)	Up to 30 ppm (Max.), 14.6 ppm (Standard), When feeding from ASF
Colour Print Speed	Text & Graphics: Up to 24 ppm (Max.), 11.6 ppm (Standard)	Text & Graphics: Up to 20 ppm (Max.), 10.9 ppm (Standard), When feeding from ASF
Ink Cartridge Configuration	Single Ink technology - 5 separate ink tanks (PGI-5BK, CLI-8BK, CLI-8C, CLI-8M, CLI-8Y)	Single Ink technology - 4 separate ink tanks (PGI-5BK, CLI-8C, CLI-8M, CLI-8Y)
Media Type	See Media Compatibility Chart on page 117	See Media Compatibility Chart on page 117
Media Input	Sheet Feeder: Max. 150 sheets Cassette: Max. 150 sheets DVD/CD tray: 1 printable DVD or CD	Rear Tray: Max. 150 sheets Front Tray: Max. 100 sheets
Media Size	Sheet Feeder: A4, B5, A5, Letter, Legal, Envelopes (DL size or Commercial 10), 4" x 6", 4" x 7", 5" x 7", 8" x 10", Credit Card (2" x 3.5") Cassette: A4, B5, A5, Letter, Envelopes (DL size or Commercial 10), 4" x 6", 4" x 7", 5" x 7", 8" x 10"	Rear Tray: A4, B5, A5, Letter, Legal, Envelopes (DL size or Commercial 10), 4" x 6", 4" x 7", 5" x 7", 8" x 10", Credit Card (2" x 3.5") Front Tray: A4, Letter, B5
Media Weight	Sheet Feeder/Cassette: 64 to 105 g/m ² and supported Canon special media up to 273 g/m ²	Rear Tray: 64 to 105 g/m ² and supported Canon special media up to 273 g/m ² Front Tray: 64 to 105 g/m ²
DVD/CD Printing	Available as standard	—
Two Sided Printing	Automatically selectable using Photo Paper Plus Double Sided, Super White Paper or plain paper in A4, B5, A5, Letter & 5" x 7" sizes	Available by manual operation using Photo Paper Plus Double Sided, Super White Paper or plain paper in A4, B5, A5, Letter & 5" x 7" sizes (Windows only)
Borderless Printing	YES (A4, 8" x 10", 5" x 7", 4" x 7", 4" x 6" & 2" x 3.5")	YES (A4, 8" x 10", 5" x 7", 4" x 7", 4" x 6" & 2" x 3.5")
Camera Interface and Connectivity	Direct Print Port: Camera direct photo printing from PictBridge compliant digital cameras & camcorders	Direct Print Port: Camera direct photo printing from PictBridge compliant digital cameras & camcorders
Card Direct Printing	CompactFlash®, Microdrive, Smart Media®, Memory Stick®, Memory Stick Pro™, SD Memory Card®, MultiMediaCard™, and SDHC Memory Card. xD-PictureCard™, Memory Stick Duo™, Memory Stick PRO Duo™, RS-MMC™ (V3.1) ⁶ and miniSD™ ⁶	CompactFlash®, Microdrive, Memory Stick®, Memory Stick Pro™, SD Memory Card®, MultiMediaCard™, and SDHC Memory Card. xD-PictureCard™, Memory Stick Duo™, Memory Stick PRO Duo™, RS-MMC™ (V3.1) ⁶ and miniSD™ ⁶
SCANNER FUNCTIONS		
Scanner Type	Flatbed CIS colour scanner	Flatbed CIS colour scanner
Scanner Resolution Optical	Up to 2400 x 4800 dpi	Up to 2400 x 4800 dpi
Scanner Resolution Digital	Up to 19200 x 19200 dpi	Up to 19200 x 19200 dpi
Colour Scanning Depth	48/24 bit (RGB each 16/8 bit)	48/24 bit (RGB each 16/8 bit)
Half-tone/Greyscale Gradation	16/8 bit	16/8 bit
Compatibility	TWAIN/WIA (Windows XP only)	TWAIN/WIA (Windows XP/Windows Vista)
Other Scanner Features	Push-scan, Multi-Scan, PDF file creation & editing*, Descreen, Unsharp mask, Stitch Assist*, Photograph corrections (Fading correction, Grain correction, Reduce dust and scratches, Backlight correction, Auto Tone), Gutter Shadow Correction * Function with MP Navigator	2-ld (up to 15mm), Push-scan, Multi-Scan, PDF file creation & editing*, Descreen, Unsharp mask, Stitch Assist*, Photograph corrections (Fading correction, Grain correction, Reduce dust and scratches, Backlight correction, Auto Tone), Gutter Shadow Correction, Text (OCR) * Function with MP Navigator
COPIER FUNCTIONS		
Copy Speed Colour Document	30 sec. ⁷	Approx. 28 sec. ⁷
Copy Speed Mono	Up to 30cpm	Up to 30cpm
Copy Speed Colour	Up to 24cpm	Up to 20cpm
Multiple Copy	1 to 99 copies	1 to 99 copies
Zoom	25 - 400% in 1% increments and preset ratios	25 - 400% in 1% increments and preset ratios
Other Copy Features	Auto Intensity (AE copy), Intensity Adjustment, Image Repeat copy, Borderless copy, Sticker copy (x2, x4, x9, x16), Two-sided copy*, 2-on-1 copy, 4-on-1 copy, Frame Erase copy, Face Brightener, DVD/CD to DVD/CD label copy, Photograph to DVD/CD label copy * For plain paper only	Auto Intensity (AE copy), Manual Intensity Adjustment, Image Repeat copy, Fit-to-page copy, Borderless copy, Sticker copy, 2-on-1 copy, 4-on-1 copy, Frame Erase copy, Trimming/Masking copy, Photo reprint, Face brightener, Fade restoration, Manual colour adjustment (brightness/contrast/hue)
PC INTERFACE AND SOFTWARE		
Interface Type - PC	USB 2.0 Hi-Speed®, Bluetooth® Ver1.2.2* (with optional Bluetooth® Unit BU-20), Wi-Fi: IEEE 802.11g/b, encryption (WPA-PSK, WPA2-PSK, WEP64/128bit), IP address filtering, blocking by MAC address registration, password, Ethernet: IEEE802.3u (100BASE-TX), IEEE802.3 (10BASE-T), 10/100Mbps (auto switchable)	USB 2.0 Hi-Speed®, Bluetooth® Ver1.2.2* (with optional Bluetooth® Unit BU-20)
Interface Type - Mobile Phone/PDA	IrDA 1.2 (JPEG only), Bluetooth® Ver1.2.2* (with optional Bluetooth® unit BU-20) (JPEG only) & Photo printing via PictBridge	Bluetooth® Ver1.2.2* (with optional Bluetooth® unit BU-20) (JPEG only) & Photo printing via PictBridge
Supported OS	Windows Vista/Windows XP SP1, SP2/Windows 2000 Professional SP2, SP3, SP4 Mac OS X v.10.2.8 - v.10.4	Windows Vista/Windows XP SP1, SP2/Windows 2000 Professional SP2, SP3, SP4 Mac OS X v.10.2.8 - v.10.4
Software Included	MP Navigator, Easy-WebPrint (Windows XP/2000/Me/98 with Internet Explorer 5.0-6.x only), Easy-PhotoPrint, CD LabelPrint, ScanSoft OmniPage SE (OCR software), ArcSoft PhotoStudio	MP Navigator EX, Easy-PhotoPrint EX*, ScanSoft OmniPage SE (OCR software) * EPP EX for Mac: available for download from the Canon web site
GENERAL FEATURES		
Dimensions (W x D x H)	450 x 389 x 194mm	445 x 378 x 172mm
Weight	Approx. 10.3kg	Approx. 7.5kg
Power Source	AC 100 - 240V, 50/60Hz	AC 100 - 240V, 50/60Hz
Power Consumption	Standby: Approx. 4.0W (when scanning lamp is off), Off: Approx. 0.8W, Copying: Approx. 17W ¹¹	Standby: Approx. 2.4W (when scanning lamp is off), Off: Approx. 1.0 W, Copying: Approx. 17 W ¹¹

PIXMA Home All-in-One Printers Specifications Chart



	PIXMA MP220	PIXMA MP210
Available Functions	Print, Scan & Copy, Camera and Memory Card direct printing	Print, Scan & Copy, Camera and Memory Card direct printing
PRINTER FUNCTIONS		
Print Resolution	Up to 4800 ² x 1200 dpi	Up to 4800 ² x 1200 dpi
Print Engine	Inkjet 4-ink with minimum 2 pl Micro-Nozzles and FINE Cartridges	Inkjet 4-ink with minimum 2 pl Micro-Nozzles and FINE Cartridges
Photo Lab Quality Speed	Borderless 4" x 6": Approx. 46 seconds (Standard)	Borderless 4" x 6": Approx. 46 seconds (Standard)
Mono Print Speed	Up to 22 ppm (Max.), 14 ppm (Standard)	Up to 22 ppm (Max.), 14 ppm (Standard)
Colour Print Speed	Text & Graphics: Up to 17 ppm (Max.), 9.0 ppm (Standard)	Text & Graphics: Up to 17 ppm (Max.), 9.0 ppm (Standard)
Ink Cartridge Configuration	FINE Cartridge - PG-37, CL-38 (Optional - PG-40, CL-41)	FINE Cartridge - PG-37, CL-38 (Optional - PG-40, CL-41)
Media Type	See Media Compatibility Chart on page 117	See Media Compatibility Chart on page 117
Media Input	Rear Tray: Max. 100 sheets	Rear Tray: Max. 100 sheets
Media Size	Rear Tray: A4, B5, A5, Letter, Legal, Envelopes (DL size or Commercial 10), 4" x 6", 4" x 7", 5" x 7", 8" x 10", Credit Card (2" x 3.5")	Rear Tray: A4, B5, A5, Letter, Legal, Envelopes (DL size or Commercial 10), 4" x 6", 4" x 7", 5" x 7", 8" x 10", Credit Card (2" x 3.5")
Media Weight	Rear Tray: 64 to 105 g/m ² and supported Canon special media up to 273 g/m ²	Rear Tray: 64 to 105 g/m ² and supported Canon special media up to 273 g/m ²
DVD/CD Printing	—	—
Two Sided Printing	Available by manual operation using Photo Paper Plus Double Sided, Super White Paper or plain paper in A4, B5, A5, Letter & 5" x 7" sizes (Windows only)	Available by manual operation using Photo Paper Plus Double Sided, Super White Paper or plain paper in A4, B5, A5, Letter & 5" x 7" sizes (Windows only)
Borderless Printing	YES (A4, 8" x 10", 5" x 7", 4" x 7", 4" x 6" & 2" x 3.5")	YES (A4, 8" x 10", 5" x 7", 4" x 7", 4" x 6" & 2" x 3.5")
Camera Interface and Connectivity	Direct Print Port: Camera direct photo printing from PictBridge compliant digital cameras & camcorders	Direct Print Port: Camera direct photo printing from PictBridge compliant digital cameras & camcorders
Card Direct Printing	CompactFlash®, Microdrive, Memory Stick®, Memory Stick Pro™, SD Memory Card®, MultiMediaCard™, and SDHC Memory Card, xD-PictureCard™®, Memory Stick Duo™®, Memory Stick PRO Duo™®, RS-MMC™®, miniSD™® and microSD™®	—
SCANNER FUNCTIONS		
Scanner Type	Flatbed CIS colour scanner	Flatbed CIS colour scanner
Scanner Resolution Optical	Up to 1200 x 2400 dpi	Up to 600 x 1200 dpi
Scanner Resolution Digital	Up to 19200 x 19200 dpi	Up to 19200 x 19200 dpi
Colour Scanning Depth	48/24 bit (RGB each 16/8 bit)	48/24 bit (RGB each 16/8 bit)
Half-tone/Greyscale Gradation	16/8 bit	16/8 bit
Compatibility	TWAIN/WIA (Windows XP/Windows Vista)	TWAIN/WIA (Windows XP only)
Other Scanner Features	Z-lid (up to 15mm), Push-scan, Multi-Scan, PDF file creation & editing*, Descreen, Unsharp mask, Stitch Assist*, Photograph corrections (Fading correction, Grain correction, Reduce dust and scratches, Backlight correction, Auto Tone), Gutter Shadow Correction, Text (OCR) * Function with MP Navigator	Z-lid (up to 15mm), Push-scan, Multi-Scan, PDF file creation & editing*, Descreen, Unsharp mask, Stitch Assist*, Photograph corrections (Fading correction, Grain correction, Reduce dust and scratches, Backlight correction, Auto Tone), Gutter Shadow Correction, Text (OCR) * Function with MP Navigator
COPIER FUNCTIONS		
Copy Speed Colour Document	Approx. 38 sec. ⁷	Approx. 38 sec. ⁷
Copy Speed Mono	Up to 22cpm	Up to 22cpm
Copy Speed Colour	Up to 17cpm	Up to 17cpm
Multiple Copy	1 to 99 copies	1 to 99 copies
Zoom	25 - 400% in 1% increments and preset ratios	—
Other Copy Features	Auto Intensity (AE copy), Manual Intensity Adjustment, Image Repeat copy, Fit-to-page copy, Borderless copy, Sticker copy, 2-on-1 copy, 4-on-1 copy, Frame Erase copy	Fit to page copy (Borderless copy)
PC INTERFACE AND SOFTWARE		
Interface Type - PC	USB 2.0 Hi-Speed ⁸	USB 2.0 Hi-Speed ⁸
Interface Type - Mobile Phone/PDA	Photo printing via PictBridge	Photo printing via PictBridge
Supported OS	Windows Vista/Windows XP SP1, SP2/Windows 2000 Professional SP2, SP3, SP4 Mac OS X v.10.2.8 - v.10.4	Windows Vista/Windows XP SP1, SP2/Windows 2000 Professional SP2, SP3, SP4 Mac OS X v.10.2.8 - v.10.4
Software Included	MP Navigator EX, Easy-PhotoPrint EX*, ScanSoft OmniPage SE (OCR software) * EPP EX for Mac: available for download from the Canon web site	MP Navigator EX, Easy-PhotoPrint EX*, ScanSoft OmniPage SE (OCR software) * EPP EX for Mac: available for download from the Canon web site
GENERAL FEATURES		
Dimensions (W x D x H)	451 x 353 x 169mm	451 x 353 x 169mm
Weight	Approx. 6.1kg	Approx. 5.9kg
Power Source	AC 100 - 240V, 50/60Hz	AC 100 - 240V, 50/60Hz
Power Consumption	Standby: Approx. 1.9W (when scanning lamp is off), Off: Approx. 1.0 W, Copying: Approx. 13 W ¹¹	Standby: Approx. 1.1W (when scanning lamp is off), Off: Approx. 0.8W, Copying: Approx. 13 W ¹¹

PIXMA Home Printers Specifications Chart



	PIXMA iP4500	PIXMA iP3500
PRINTER FUNCTIONS		
Print Resolution	Up to 9600 ¹ x 2400 dpi	Up to 4800 ² x 1200 dpi
Print Engine	Inkjet 5-ink with minimum 1 pl Micro-Nozzles & FINE print head	Inkjet 4-ink with minimum 2 pl Micro-Nozzles & FINE print head
Photo Lab Quality Speed	Borderless 4" x 6": Approx. 21 seconds (Standard)	Borderless 4" x 6": Approx. 47 seconds (Standard)
Mono Print Speed	Up to 31 ppm (Max.), 14.9 ppm (Standard)	Up to 25 ppm (Max.), 13.9 ppm (Standard)
Colour Print Speed	Text & Graphics: Up to 24 ppm (Max.), 11.7 ppm (Standard)	Text & Graphics: Up to 17 ppm (Max.), 10.4 ppm (Standard)
Ink Cartridge Configuration	Single Ink technology - 5 separate ink tanks (PGI-5BK, CLI-8BK, CLI-8C, CLI-8M, CLI-8Y)	Single Ink technology - 4 separate ink tanks (PGI-5BK, CLI-8C, CLI-8M, CLI-8Y)
Media Type	See Media Compatibility Chart on page 117	See Media Compatibility Chart on page 117
Media Input	Rear Tray: Max. 150 sheets Cassette: Max. 150 sheets DVD/CD Tray: 1 printable DVD or CD	Rear Tray: Max. 150 sheets Front Feeder: Max. 100 sheets
Media Size	Sheet Feeder: A4, B5, A5, Letter, Legal, Envelopes (DL size or Commercial 10), 4" x 6", 4" x 7", 5" x 7", 8" x 10", Credit Card (2" x 3.5") Cassette: A4, B5, A5, Letter, Envelopes (DL size or Commercial 10), 4" x 6", 4" x 7", 5" x 7", 8" x 10"	Rear Tray: A4, B5, A5, Letter, Legal, Envelopes (DL size or Commercial 10), 4" x 6", 4" x 7", 5" x 7", 8" x 10", Credit Card (2" x 3.5") Front Feeder: A4, B5, Letter
Media Weight	Rear Tray/Cassette: 64 to 105 g/m ² and supported Canon special media up to 273 g/m ²	Rear Tray: 64 to 105 g/m ² and supported Canon special media up to 273 g/m ² Front Feeder: 64 to 105 g/m ²
DVD/CD Printing	Available as standard	—
Two Sided Printing	Automatically selectable using Photo Paper Plus Double Sided, Super White Paper or plain paper in A4, B5, A5, Letter & 5" x 7" sizes (Windows only)	Available by manual operation using Photo Paper Plus Double Sided, Super White Paper or plain paper in A4, B5, A5, Letter & 5" x 7" sizes (Windows only)
Borderless Printing	YES (A4, 8" x 10", 5" x 7", 4" x 7", 4" x 6" & 2" x 3.5")	YES (A4, 8" x 10", 5" x 7", 4" x 7", 4" x 6" & 2" x 3.5")
Camera Interface and Connectivity	Direct Print Port: Camera direct photo printing from PictBridge compliant digital cameras & camcorders	Direct Print Port: Camera direct photo printing from PictBridge compliant digital cameras & camcorders
Card Direct Printing	—	—
Driver Features	Windows: Photo Optimizer PRO, Image Optimizer, Photo Noise Reduction, Vivid Photo Mac: Photo Optimizer PRO, Photo Noise Reduction, Vivid Photo	Windows: Photo Optimizer PRO, Image Optimizer, Photo Noise Reduction, Vivid Photo Mac: Photo Optimizer PRO, Photo Noise Reduction, Vivid Photo
INTERFACE AND SOFTWARE		
Interface Type - PC	USB 2.0 Hi-Speed ⁸	USB 2.0 Hi-Speed ⁸
Interface Type - Mobile Phone / PDA	Photo printing via PictBridge	Photo printing via PictBridge
Supported Operating System	Windows Vista/Windows XP SP1, SP2/Windows 2000 Professional SP2, SP3, SP4 Mac OS X v.10.2.8 - v.10.4	Windows Vista/Windows XP SP1, SP2/Windows 2000 Professional SP2, SP3, SP4 Mac OS X v.10.2.8 - v.10.4
Software Included	Windows: Easy-PhotoPrint EX, CD-LabelPrint Mac: Easy-PhotoPrint EX (available for download from Canon web site)	Windows: Easy-PhotoPrint EX Mac: Easy-PhotoPrint EX (available for download from the Canon web site)
GENERAL FEATURES		
Dimensions (W x D x H)	445 x 303 x 160mm	436 x 302 x 145mm
LCD Screen	—	—
Number of Language (LCD)	—	—
Temperature Range	Operating environment: 5° - 35°C	Operating environment: 5° - 35°C
Humidity	Operating humidity: 10 - 90%RH (no condensation)	Operating humidity: 10 - 90%RH (no condensation)
Acoustic Noise Levels	Printing: Approx. 34.5dB(A) in best quality mode	Printing: Approx. 36.5dB(A) when printing in the highest print quality mode on Photo Paper Pro and feeding from the rear tray
Weight	Approx. 6.9kg	Approx. 4.9 kg
Power Source	AC 100 - 240V, 50/60Hz	AC 100 - 240V, 50/60Hz
Power Consumption	Standby: Approx. 1.2W Off: Approx. 1.0W Printing: 13.0W ¹²	Standby: Approx. 0.8W Off: Approx. 0.4W Printing: Approx. 11W ¹²

PIXMA Home Printers Specifications Chart



	PIXMA iP2500	PIXMA iP1800
PRINTER FUNCTIONS		
Print Resolution	Up to 4800 ² x 1200 dpi	Up to 4800 ² x 1200 dpi
Print Engine	Inkjet 4-ink with minimum 2 pl Micro-Nozzles and FINE Cartridge	Inkjet 4-ink with minimum 2 pl Micro-Nozzles and FINE Cartridge
Photo Lab Quality Speed	Borderless 4" x 6": Approx. 55 seconds (Standard)	Borderless 4" x 6": Approx. 70 seconds (Standard)
Mono Print Speed	Up to 22 ppm (Max.), 13.3 ppm (Standard)	Up to 20 ppm (Max.), 13.3 ppm (Standard)
Colour Print Speed	Text & Graphics: Up to 17 ppm (Max.), 7.8 ppm (Standard)	Text & Graphics: Up to 16 ppm (Max.), 7.8 ppm (Standard)
Ink Cartridge Configuration	FINE Cartridge - PG-37, CL-38 (Optional - PG-40, CL-41)	FINE Cartridge - PG-37, CL-38 (Optional - PG-40, CL-41)
Media Type	See Media Compatibility Chart on page 117	See Media Compatibility Chart on page 117
Media Input	Sheet Feeder: Max. 100 sheets	Sheet Feeder: Max. 100 sheets
Media Size	Sheet Feeder: A4, B5, A5, Letter, Legal, Envelopes (DL size or Commercial 10), 4" x 6", 4" x 7" (Wide), 5" x 7", 8" x 10", Credit Card (2" x 3.5")	Sheet Feeder: A4, B5, A5, Letter, Legal, Envelopes (DL size or Commercial 10), 4" x 6", 4" x 7" (Wide), 5" x 7", 8" x 10", Credit Card (2" x 3.5")
Media Weight	Sheet Feeder: 64 to 105 g/m ² and supported Canon special media up to 273 g/m ²	Sheet Feeder: 64 to 105 g/m ² and supported Canon special media up to 273 g/m ²
DVD/CD Printing	—	—
Two Sided Printing	Available by manual operation using Photo Paper Plus Double Sided, Super White Paper or plain paper in A4, B5, A5, Letter & 5" x 7" sizes (Windows only)	Available by manual operation using Photo Paper Plus Double Sided, Super White Paper or plain paper in A4, B5, A5, Letter & 5" x 7" sizes (Windows only)
Borderless Printing	YES (A4, 8" x 10", 5" x 7", 4" x 7", 4" x 6" & 2" x 3.5")	YES (A4, 8" x 10", 5" x 7", 4" x 7", 4" x 6" & 2" x 3.5")
Camera Interface and Connectivity	—	—
Card Direct Printing	—	—
Driver Features	Windows: Photo Optimizer PRO, Image Optimizer, Photo Noise Reduction, Vivid Photo Mac: Photo Optimizer PRO, Photo Noise Reduction, Vivid Photo	Windows: Photo Optimizer PRO, Image Optimizer, Photo Noise Reduction, Vivid Photo Mac: Photo Optimizer PRO, Photo Noise Reduction, Vivid Photo
INTERFACE AND SOFTWARE		
Interface Type - PC	USB 2.0 ⁸	USB 2.0 ⁸
Interface Type - Mobile Phone / PDA	—	—
Supported Operating System	Windows Vista/Windows XP SP1, SP2/Windows 2000 Professional SP2, SP3, SP4 Mac OS X v.10.2.8 - v.10.4	Windows Vista/Windows XP SP1, SP2/Windows 2000 Professional SP2, SP3, SP4 Mac OS X v.10.2.8 - v.10.4
Software Included	Windows: Easy-PhotoPrint, Easy-LayoutPrint Mac: Easy-PhotoPrint, Easy-LayoutPrint	Windows: Easy-PhotoPrint, Easy-LayoutPrint Mac: Easy-PhotoPrint, Easy-LayoutPrint
GENERAL FEATURES		
Dimensions (W x D x H)	442 x 237 x 152mm	442 x 237 x 152mm
LCD Screen	—	—
Number of Language (LCD)	—	—
Temperature Range	Operating environment: 5° - 35°C	Operating environment: 5° - 35°C
Humidity	Operating humidity: 10 - 90%RH (no condensation)	Operating humidity: 10 - 90%RH (no condensation)
Acoustic Noise Levels	Printing: Approx. 44.5dB(A) in best quality mode	Printing: Approx. 43dB(A) in best quality mode
Weight	Approx. 3.3kg	Approx. 3.3kg
Power Source	AC 100 - 240V, 50/60Hz	AC 100 - 240V, 50/60Hz
Power Consumption	Standby: Approx. 0.7W Off: Approx. 0.5W Printing: 7.0W	Standby: Approx. 0.7W Off: Approx. 0.5W Printing: 7.0W

PIXMA Office All-in-One Printers Specifications Chart



	PIXMA MP830	PIXMA MX700
Available Functions	Print, Scan & Copy, Camera, Memory Card, direct printing with 6.3cm Colour LCD viewer and 35 page Auto Duplex ADF	Print, Scan, Copy, Fax, 30 page ADF and Camera direct printing
PRINTER FUNCTIONS		
Print Resolution	Up to 9600 ¹ x 2400 dpi	Up to 4800 ² x 1200 dpi
Print Engine	Inkjet 5-ink with minimum 1 pl Micro-Nozzles, FINE print head and ContrastPLUS	Inkjet 4-ink with minimum 2 pl Micro-Nozzles, FINE print head
Photo Lab Quality Speed	Borderless 4" x 6": Approx. 36 seconds (Standard)	Borderless 4" x 6": Approx. 46 seconds (Standard)
Mono Print Speed	Up to 30 ppm (Max.), 15 ppm (Standard)	Up to 30 ppm (Max.), 14.6 ppm (Standard)
Colour Print Speed	Text & Graphics: Up to 24 ppm (Max.), 11.7 ppm (Standard)	Text & Graphics: Up to 20 ppm (Max.), 10.9 ppm (Standard)
Ink Cartridge Configuration	Single Ink technology - 5 separate ink tanks (PGI-5BK, CLI-8BK, CLI-8C, CLI-8M, CLI-8Y)	Single Ink technology - 4 separate ink tanks (PGI-5BK, CLI-8C, CLI-8M, CLI-8Y)
Media Type	See Media Compatibility Chart on page 117	See Media Compatibility Chart on page 117
Media Input	Sheet Feeder: Max. 150 sheets, Cassette: Max. 150 sheets DVD/CD Tray: 1 printable DVD or CD	Rear Tray: Max. 150 sheets, Front Feeder: Max. 100 sheets
Media Size	Sheet Feeder: A4, B5, A5, Letter, Legal, Envelopes (DL size or Commercial 10), 4" x 6", 5" x 7", 8" x 10", Credit Card (2" x 3.5") Cassette: A4, B5, A5, Letter, Envelopes (DL size or Commercial 10), 4" x 6", 5" x 7", 8" x 10"	Rear Tray: A4, B5, A5, Letter, Legal, Envelopes (DL size or Commercial 10), 4" x 6", 4" x 7", 5" x 7", 8" x 10", Credit Card (2" x 3.5") Front Feeder: A4, Letter, B5
Media Weight	Sheet Feeder/Cassette: 64 to 105 g/m ² and supported Canon special media up to 273 g/m ²	Rear Tray: 64 to 105 g/m ² and supported Canon special media up to 273 g/m ² Front Tray: 64 to 105 g/m ²
DVD/CD Printing	Available as standard	—
Two Sided Printing	Automatically selectable using Photo Paper Plus Double Sided, Super White Paper or plain paper in A4, B5, A5, Letter & 13 x 18cm sizes	Available by manual operation using Photo Paper Plus Double Sided, Super White Paper or plain paper in A4, B5, A5, Letter & 5" x 7" sizes (Windows only)
Borderless Printing	YES (A4, 8" x 10", 5" x 7", 4" x 6" & 2" x 3.5")	YES (A4, 8" x 10", 5" x 7", 4" x 6" & 2" x 3.5")
Camera Interface and Connectivity	Direct Print Port: Camera direct photo printing from PictBridge & Bubble Jet Direct compliant digital cameras & camcorders	Direct Print Port: Camera direct photo printing from PictBridge compliant digital cameras & camcorders
Card Direct Printing	CompactFlash [®] , Microdrive, Smart Media [®] , Memory Stick [®] , Memory Stick Pro [™] , SD Memory Card [®] and MultiMediaCard [™] (V3.31), xD-PictureCard [™] , Memory Stick Duo [™] , Memory Stick PRO Duo [™] , RS-MMC [™] (V3.31) ⁵ and miniSD [™] 6	CompactFlash [®] , Microdrive, Memory Stick [®] , Memory Stick Pro [™] , SD Memory Card [®] and MultiMediaCard [™] , xD-PictureCard [™] , Memory Stick Duo [™] , Memory Stick PRO Duo [™] , RS-MMC [™] (V3.31) ⁵ , miniSD [™] 6 and microSD [™] 6
FAX FUNCTIONS		
Standalone fax	YES	YES
PC Fax	Win: Via Fax modem (in MFP), Mac: —	Win: Via Fax modem (in MFP) ⁷ , Mac: — *1 location, B/W transmission only
Colour Fax	YES	YES
Transmission Speed Mono	Approx. 3 sec./page (based on ITU-T Standard Chart No. 1)	Approx. 3 sec./page (33.6kbps) (when receiving Canon Fax Standard Chart No.1, in Standard mode)
Transmission Speed Colour	Approx. 1 min 20 sec./page (based on Canon colour test sheet)	Approx. 1 min/page (33.6kbps) (when receiving Canon Colour Fax Standard Test Sheet)
Modem Speed	33.6kbps	33.6k/31.2k/28.8k/26.4k/24k/21.6k/19.2k/16.8k/14.4k/12k/9.6k/7.2k/4.8k/2.4kbps (Automatic fall back)
Compression Method Mono/Colour	Mono: MH, MR, MMR, Colour: JPEG	Mono: MH, MR, MMR, Colour: JPEG
Fax Resolution	Mono: 8line/mm x 3.85line/mm (standard), 8line/mm x 7.7line/mm (fine), Colour: 200 x 200 dpi	Mono: 8line/mm x 3.85line/mm (standard), 8line/mm x 7.7line/mm (fine), Colour: 200 x 200 dpi
Image Processing System		
Half-tone/Greyscale Gradation	Mono: 256 levels, Colour: 24 bit (full colour) (RGB each 8 bit)	Mono: 256 levels, Colour: 24 bit (full colour) (RGB each 8 bit)
Fax Memory	Up to 250 pages (when receiving Canon Standard Chart)	Up to 100 pages (when receiving Canon Fax Standard Chart No.1, in Standard mode)
One Touch Dials	8 one touch dials	—
Remote Reception	YES	YES
Memory Transmission	YES	YES
Sequential Broadcast	109 locations	—
Error Correction Mode (ECM)	YES, ITU-T.30 compatible	YES, ITU-T.30 compatible
Telephone Handset	NO	NO
Polling	—	—
Reports	Activity report, Telephone number lists (One-touch dial, Coded speed dial, Group dial), User's data list, Memory list, TX (Transmission report), RX (Reception report), Multi TX/RX (Transaction report)	Activity report, Coded speed dial telephone number list, User's data list, Memory list, TX (Transmission report), RX (Reception report)
SCANNER FUNCTIONS		
Scanner Type	Flatbed and ADF, CCD colour scanner	Flatbed and ADF, CIS colour scanner
Scanner Resolution Optical	Up to 2400 x 4800 dpi (Platen), Up to 600 x 600 dpi (ADF)	Up to 2400 x 4800 dpi
Scanner Resolution Digital	Up to 19200 x 19200 dpi (Platen only)	Up to 19200 x 19200 dpi
Colour Scanning Depth	48/24 bit (RGB each 16/8 bit)	48/24 bit (RGB each 16/8 bit)
Half-tone/Greyscale Gradation	48/8 bit	16/8 bit
Compatibility	TWAIN/WIA (Windows XP only)	TWAIN/WIA (Windows XP/Windows Vista)
Other Scanner Features	Push-scan (from main unit), Multi-scan, PDF file creation & editing, Photograph corrections (Fading correction, Grain correction, Reduce dust and scratches, Backlight correction), Descreen, Unsharp mask, OCR	Push-scan, Multi-Scan, PDF file creation & editing ⁹ , Descreen, Unsharp mask, Stitch Assist ⁸ , Photograph corrections (Fading correction, Grain correction, Reduce dust and scratches, Backlight correction, Auto Tone), Gutter Shadow Correction, Text (OCR) * Function with MP Navigator
COPIER FUNCTIONS		
Copy Speed Colour Document	25 sec. ⁷	Approx. 28 sec. ⁷
Copy Speed Mono	Up to 29cpm	Up to 30cpm
Copy Speed Colour	Up to 24cpm	Up to 20cpm
Multiple Copy	1 to 99 copies	1 to 99 copies
Zoom	25 - 400% in 1% increments and preset ratios	25 - 400% in 1% increments and preset ratios
Other Copy Features	Auto Intensity (AE copy), Intensity Adjustment, Duplex copy (for plain paper only), DVD/CD to DVD/CD label copy, 4-on-1 copy, 2-on-1 copy, Sticker (x2, x4, x9, x16), Borderless copy, Image Repeat copy, Fade restored copy, Sort	Auto Intensity (AE copy), Manual Intensity Adjustment, Image Repeat copy, Fit-to-page copy, Borderless copy, Sticker copy, 2-on-1 copy, 4-on-1 copy, Frame Erase copy, Fade restore copy, Sort (colated copy)
INTERFACE AND SOFTWARE		
Interface Type - PC	USB 2.0 Hi-Speed ⁸	USB 2.0 Hi-Speed ⁸ , Ethernet: IEEE802.3u (100BASE-TX), IEEE802.3 (10BASE-T), 10/100Mbps (auto switchable)
Interface Type - Mobile Phone/PDA	Photo printing via PictBridge	Photo printing via PictBridge
Supported OS	Windows Vista/Windows XP SP1, SP2/Windows 2000 Professional SP2, SP3, SP4/Windows ME/Windows 98, 98 SE Mac OS X v.10.2.8 - v.10.4	Windows Vista/Windows XP SP1, SP2/Windows 2000 Professional SP2, SP3, SP4 Mac OS X v.10.2.8 - v.10.4
Software Included	MP Navigator, Easy-WebPrint (Windows XP/2000/Me/98 with Internet Explorer 5.0-6.x only), Easy-PhotoPrint, CD LabelPrint, ScanSoft OmniPage SE (OCR software), NewSoft Presto! PageManager	MP Navigator EX, Easy-PhotoPrint EX ⁹ , ScanSoft OmniPage SE (OCR software), NewSoft Presto! PageManager (Windows only) * EPP EX for Mac: available for download from the Canon web site
GENERAL FEATURES		
Dimensions (W x D x H)	500 x 487 x 292mm	480 x 463 x 239mm
Weight	Approx. 14.7kg	Approx. 10.4 kg
Power Source	AC 100 - 240V, 50/60Hz	AC 100 - 240V, 50/60Hz
Power Consumption	Standby: Approx. 4.0W (when scanning lamp is off), Off: Approx. 1.0W, Copying: Approx. 25W ¹¹	Standby: Approx. 4.5 W (when scanning lamp is off), Off: Approx. 1.2 W, Copying: Approx. 21 W ¹¹

PIXMA Office All-in-One Printers Specifications Chart



	PIXMA MX310	PIXMA MX300
Available Functions	Print, Scan, Copy, Fax, 30 page ADF and Camera direct printing	Print, Scan, Copy, Fax, and Camera direct printing
PRINTER FUNCTIONS		
Print Resolution	Up to 4800 ² x 1200 dpi	Up to 4800 ² x 1200 dpi
Print Engine	Inkjet 4-ink with minimum 2 pl Micro-Nozzles and FINE Cartridges	Inkjet 4-ink with minimum 2 pl Micro-Nozzles and FINE Cartridges
Photo Lab Quality Speed	Borderless 4" x 6": Approx. 46 seconds (Standard)	Borderless 4" x 6": Approx. 46 seconds (Standard)
Mono Print Speed	Up to 22 ppm (Max.), 13.9 ppm (Standard)	Up to 22 ppm (Max.), 13.9 ppm (Standard)
Colour Print Speed	Text & Graphics: Up to 17 ppm (Max.), 9.1 ppm (Standard)	Text & Graphics: Up to 17 ppm (Max.), 9.1 ppm (Standard)
Ink Cartridge Configuration	FINE Cartridge - PG-40, CL-41 (Optional - PG-37, CL-38 and PG-50, CL-51)	FINE Cartridge - PG-40, CL-41 (Optional - PG-37, CL-38 and PG-50, CL-51)
Media Type	See Media Compatibility Chart on page 117	See Media Compatibility Chart on page 117
Media Input	Rear Tray: Max. 100 sheets	Rear Tray: Max. 100 sheets
Media Size	Rear Tray: A4, B5, A5, Letter, Legal, Envelopes (DL size or Commercial 10), 4" x 6", 4" x 7", 5" x 7", 8" x 10", Credit Card (2" x 3.5")	Rear Tray: A4, B5, A5, Letter, Legal, Envelopes (DL size or Commercial 10), 4" x 6", 4" x 7", 5" x 7", 8" x 10", Credit Card (2" x 3.5")
Media Weight	Rear Tray: 64 to 105 g/m ² and supported Canon special media up to 273 g/m ²	Rear Tray: 64 to 105 g/m ² and supported Canon special media up to 273 g/m ²
DVD/CD Printing	—	—
Two Sided Printing	Available by manual operation using Photo Paper Plus Double Sided, Super White Paper or plain paper in A4, B5, A5, Letter & 5" x 7" sizes (Windows only)	Available by manual operation using Photo Paper Plus Double Sided, Super White Paper or plain paper in A4, B5, A5, Letter & 5" x 7" sizes (Windows only)
Borderless Printing	YES (A4, 8" x 10", 5" x 7", 4" x 7", 4" x 6" & 2" x 3.5")	YES (A4, 8" x 10", 5" x 7", 4" x 7", 4" x 6" & 2" x 3.5")
Camera Interface and Connectivity	Direct Print Port: Camera direct photo printing from PictBridge compliant digital cameras & camcorders	Direct Print Port: Camera direct photo printing from PictBridge compliant digital cameras & camcorders
Card Direct Printing	—	—
FAX FUNCTIONS		
Standalone fax	YES	YES
PC Fax	Win: Via Fax modem (in MFP)*, Mac: — *1 location, B/W transmission only	Win: Via Fax modem (in MFP)*, Mac: — *1 location, B/W transmission only
Colour Fax	YES	YES
Transmission Speed Mono	Approx. 3 sec./page (33.6kbps) (when receiving Canon Fax Standard Chart No.1, in Standard mode)	Approx. 3 sec./page (33.6kbps) (when receiving Canon Fax Standard Chart No.1, in Standard mode)
Transmission Speed Colour	Approx. 1 min/page (33.6kbps) (when receiving Canon Colour Fax Standard Test Sheet)	Approx. 1 min/page (33.6kbps) (when receiving Canon Colour Fax Standard Test Sheet)
Modem Speed	33.6k/31.2k/28.8k/26.4k/24k/21.6k/19.2k/16.8k/14.4k/12k/9.6k/7.2k/4.8k/2.4kbps (Automatic fall back)	33.6k/31.2k/28.8k/26.4k/24k/21.6k/19.2k/16.8k/14.4k/12k/9.6k/7.2k/4.8k/2.4kbps (Automatic fall back)
Compression Method Mono/Colour	Mono: MH, MR, MMR, Colour: JPEG	Mono: MH, MR, MMR, Colour: JPEG
Fax Resolution	Mono: 8line/mm x 3.85line/mm (standard), 8line/mm x 7.7line/mm (fine), Colour: 200 x 200 dpi	Mono: 8line/mm x 3.85line/mm (standard), 8line/mm x 7.7line/mm (fine), Colour: 200 x 200 dpi
Image Processing System	UHQ	UHQ
Half-tone/Greyscale Gradation	Mono: 256 levels, Colour: 24 bit (full colour) (RGB each 8 bit)	Mono: 256 levels, Colour: 24 bit (full colour) (RGB each 8 bit)
Fax Memory	Up to 50 pages (when receiving Canon Fax Standard Chart No.1, in Standard mode)	Up to 50 pages (when receiving Canon Fax Standard Chart No.1, in Standard mode)
One Touch Dials	—	—
Remote Reception	YES	YES
Memory Transmission	YES	YES
Sequential Broadcast	—	—
Error Correction Mode (ECM)	YES, ITU-T.30 compatible	YES, ITU-T.30 compatible
Telephone Handset	NO	NO
Polling	—	—
Reports	Activity report, Coded speed dial telephone number list, User's data list, Memory list, TX (Transmission report), RX (Reception report)	Activity report, Coded speed dial telephone number list, User's data list, Memory list, TX (Transmission report), RX (Reception report)
SCANNER FUNCTIONS		
Scanner Type	Flatbed and ADF, CIS colour scanner	Flatbed CIS colour scanner
Scanner Resolution Optical	Up to 1200 x 2400 dpi	Up to 600 x 1200 dpi
Scanner Resolution Digital	Up to 19200 x 19200 dpi	Up to 19200 x 19200 dpi
Colour Scanning Depth	48/24 bit (RGB each 16/8 bit)	48/24 bit (RGB each 16/8 bit)
Half-tone/Greyscale Gradation	16/8 bit	16/8 bit
Compatibility	TWAIN/WIA (Windows XP/Windows Vista)	TWAIN/WIA (Windows XP/Windows Vista)
Other Scanner Features	Push-scan, Multi-Scan, PDF file creation & editing*, Descreen, Unsharp mask, Stitch Assist*, Photograph corrections (Fading correction, Grain correction, Reduce dust and scratches, Backlight correction, Auto Tone), Gutter Shadow Correction, Text (OCR) * Function with MP Navigator	Push-scan, Multi-Scan, PDF file creation & editing*, Descreen, Unsharp mask, Stitch Assist*, Photograph corrections (Fading correction, Grain correction, Reduce dust and scratches, Backlight correction, Auto Tone), Gutter Shadow Correction, Text (OCR) * Function with MP Navigator
COPIER FUNCTIONS		
Copy Speed Colour Document	Approx. 38 sec. ⁷	Approx. 40 sec. ⁷
Copy Speed Mono	Up to 22cpm	Up to 22cpm
Copy Speed Colour	Up to 17cpm	Up to 17cpm
Multiple Copy	1 to 99 copies	1 to 99 copies
Zoom	25 - 400% in 1% increments and preset ratios	25 - 400% in 1% increments and preset ratios
Other Copy Features	Auto Intensity (AE copy), Manual Intensity Adjustment, Image Repeat copy, Fit-to-page copy, Borderless copy, Sticker copy, 2-on-1 copy, 4-on-1 copy, Frame Erase copy, Sort (colated copy)	Auto Intensity (AE copy), Manual Intensity Adjustment, Image Repeat copy, Fit-to-page copy, Borderless copy, Sticker copy, 2-on-1 copy, 4-on-1 copy, Frame Erase copy
INTERFACE AND SOFTWARE		
Interface Type - PC	USB 2.0 Hi-Speed ⁸	USB 2.0 Hi-Speed ⁸
Interface Type - Mobile Phone/PDA	Photo printing via PictBridge	Photo printing via PictBridge
Supported OS	Windows Vista/Windows XP SP1, SP2/Windows 2000 Professional SP2, SP3, SP4 Mac OS X v.10.2.8 - v.10.4	Windows Vista/Windows XP SP1, SP2/Windows 2000 Professional SP2, SP3, SP4 Mac OS X v.10.2.8 - v.10.4
Software Included	MP Navigator EX, Easy-PhotoPrint EX*, ScanSoft OmniPage SE (OCR software), NewSoft! Presto! PageManager (Windows only) * EPP EX for Mac: available for download from the Canon web site	MP Navigator EX, Easy-PhotoPrint EX*, ScanSoft OmniPage SE (OCR software), NewSoft! Presto! PageManager (Windows only) * EPP EX for Mac: available for download from the Canon web site
GENERAL FEATURES		
Dimensions (W x D x H)	465 x 440 x 230mm	465 x 440 x 174mm
Weight	Approx. 8.6 kg	Approx. 7.0 kg
Power Source	AC 100 - 240V, 50/60Hz	AC 100 - 240V, 50/60Hz
Power Consumption	Standby: Approx. 1.8 W (when scanning lamp is off), Off: Approx. 1.1 W, Copying: Approx. 16 W ¹¹	Standby: Approx. 1.7 W (when scanning lamp is off), Off: Approx. 1.0 W, Copying: Approx. 13 W ¹¹

PIXMA Office All-in-One Printers Specifications Chart



	PIXMA iP90v	PIXMA iX5000	PIXMA iX4000
PRINTER FUNCTIONS			
Print Resolution	Up to 4800 ² x 1200 dpi	Up to 4800 ² x 1200 dpi	Up to 4800 ² x 1200 dpi
Print Engine	Inkjet 4-ink with minimum 2 pl Micro-Nozzles & FINE print head	Inkjet 4-ink with minimum 2 pl Micro-Nozzles & FINE print head	Inkjet 4-ink with minimum 2 pl Micro-Nozzles & FINE print head
Photo Lab Quality Speed	Borderless 4" x 6": Approx. 81 seconds (Standard)	A3+: Approx. 166 seconds (Standard) ³	A3+: Approx. 166 seconds (Standard) ³
Mono Print Speed	Up to 16 ppm (Max.), 12.7 ppm (Standard)	Up to 25 ppm (Max.), 12.2 ppm (Standard)	Up to 18 ppm (Max.), 11.3 ppm (Standard)
Colour Print Speed	Text & Graphics: Up to 12 ppm (Max.), 7.2 ppm (Standard)	Text & Graphics: Up to 17 ppm (Max.), 9.5 ppm (Standard)	Text & Graphics: Up to 14 ppm (Max.), 8.9 ppm (Standard)
Ink Cartridge Configuration	Cartridge - BCI-15 Black, BCI-16 Color	Single Ink technology - 4 separate ink tanks (PGI-5BK, CLI-8C, CLI-8M, CLI-8Y)	Single Ink technology - 4 separate ink tanks (PGI-5BK, CLI-8C, CLI-8M, CLI-8Y)
Media Type	See Media Compatibility Chart on page 117	See Media Compatibility Chart on page 117	See Media Compatibility Chart on page 117
Media Input	Sheet Feeder: Max. 30 sheets	Sheet Feeder: Max. 150 sheets	Sheet Feeder: Max. 150 sheets
Media Size	Sheet Feeder: A4, B5, A5, Letter, Legal, Envelopes (DL size or Commercial 10), 4" x 6", 5" x 7", 5" x 7", 8" x 10", Credit Card (2" x 3.5")	Sheet Feeder: A3+, A3, B4, A4, B5, A5, Letter, Legal, Envelopes (DL size or Commercial 10), 10" x 12", 8" x 10", 5" x 7", 4" x 6", Credit Card (2" x 3.5")	Sheet Feeder: A3+, A3, B4, A4, B5, A5, Letter, Legal, Envelopes (DL size or Commercial 10), 10" x 12", 8" x 10", 5" x 7", 4" x 6", Credit Card (2" x 3.5")
Media Weight	Sheet Feeder: 64 to 105 g/m ² and supported Canon special media up to 273 g/m ²	Sheet Feeder: 64 to 105 g/m ² and supported Canon special media up to 273 g/m ²	Sheet Feeder: 64 to 105 g/m ² and supported Canon special media up to 273 g/m ²
DVD/CD Printing	—	—	—
Two Sided Printing	Available by manual operation using Photo Paper Plus Double Sided, Super White Paper or plain paper in A4, B5, A5, Letter & 5" x 7" sizes (Windows only)	Available by manual operation only using Photo Paper Plus Double Sided, Super White Paper or plain paper in A3+, A3, A4, B5, A5, Letter & 5" x 7" sizes	Available by manual operation only using Photo Paper Plus Double Sided, Super White Paper or plain paper in A3+, A3, A4, B5, A5, Letter & 5" x 7" sizes
Borderless Printing	YES (A4, 5" x 7", 4" x 6" & 2" x 3.5")	YES (A3+, A3, A4, 10" x 12", 8" x 10", 5" x 7", 4" x 6" & 2" x 3.5")	YES (A3+, A3, A4, 10" x 12", 8" x 10", 5" x 7", 4" x 6" & 2" x 3.5")
Camera Interface and Connectivity	Direct Print Port: Camera direct photo printing from PictBridge compliant digital cameras & camcorders	Direct Print Port: Camera direct photo printing from PictBridge compliant digital cameras & camcorders	Direct Print Port: Camera direct photo printing from PictBridge compliant digital cameras & camcorders
Card Direct Printing	—	—	—
DRIVER FEATURES			
Driver Features	Windows: Photo Optimizer PRO, Image Optimizer, Photo Noise Reduction, Vivid Photo Mac: Photo Optimizer PRO, Photo Noise Reduction, Vivid Photo	Windows: Photo Optimizer PRO, Image Optimizer, Photo Noise Reduction, Vivid Photo Mac: Photo Optimizer PRO, Photo Noise Reduction, Vivid Photo	Windows: Photo Optimizer PRO, Image Optimizer, Photo Noise Reduction, Vivid Photo Mac: Photo Optimizer PRO, Photo Noise Reduction, Vivid Photo
INTERFACE AND SOFTWARE			
Interface Type - PC	USB 2.0 ⁹ , Bluetooth [®] Ver.1.1 ⁹ (with optional Bluetooth [®] Unit BU-10)	USB 2.0 Hi-Speed ⁸	USB 2.0 Hi-Speed ⁸
Interface Type - Mobile Phone/PDA	IrDA 1.1 (JPEG only), Bluetooth [®] Ver.1.1 ⁷ (JPEG only with optional Bluetooth [®] Unit BU-10) & Photo printing via PictBridge	Photo printing via PictBridge	Photo printing via PictBridge
Supported Operating System	Windows Vista/Windows XP SP1, SP2/Windows 2000 Professional SP2, SP3, SP4 Mac OS X v.10.2.8 - v.10.4	Windows Vista/Windows XP SP1, SP2/Windows 2000 Professional SP2, SP3, SP4/Windows ME/Windows 98, 98 SE Mac OS X v.10.2.1 - v.10.4	Windows Vista/Windows XP SP1, SP2/Windows 2000 Professional SP2, SP3, SP4/Windows ME/Windows 98, 98 SE Mac OS X v.10.2.1 - v.10.4
Software Included	Windows: Easy-PhotoPrint, Easy-WebPrint (Windows XP/2000/ME/98 with Internet Explorer 5.0-6.x), PhotoRecord (Windows XP/2000/ME/98) Mac: Easy-PhotoPrint	Windows: Easy-PhotoPrint, Easy-WebPrint (Windows XP/2000/ME/98 with Internet Explorer 5.0-6.x), PhotoRecord (Windows XP/2000/ME/98) Mac: Easy-PhotoPrint	Windows: Easy-PhotoPrint, Easy-WebPrint (Windows XP/2000/ME/98 with Internet Explorer 5.0-6.x), PhotoRecord (Windows XP/2000/ME/98) Mac: Easy-PhotoPrint
GENERAL FEATURES			
Dimensions (W x D x H)	310 x 174 x 51.8mm	601 x 317.6 x 193.2mm	601 x 317.6 x 193.2mm
LCD Screen	—	—	—
Number of Language (LCD)	—	—	—
Temperature Range	Operating environment: 5° - 35°C	Operating environment: 5° - 35°C	Operating environment: 5° - 35°C
Humidity	Operating humidity: 10 - 90%RH (no condensation)	Operating humidity: 10 - 90%RH (no condensation)	Operating humidity: 10 - 90%RH (no condensation)
Acoustic Noise Levels	Printing: Approx. 40dB(A) in best quality mode	Printing: Approx. 37dB(A) in best quality mode	Printing: Approx. 37dB(A) in best quality mode
Weight	Approx. 1.8kg	Approx. 9.3kg	Approx. 9.3kg
Power Source	AC: 100 - 240V, 50/60Hz Car adapter (optional): PU-100U, Input voltage 12 - 24V DC (negative ground) Battery ¹⁰ : LB-51 Li-ion	AC 100 - 240V, 50/60Hz	AC 100 - 240V, 50/60Hz
Power Consumption	Standby: Less than 1.0W, Off: Approx. 0.2W Printing: Approx. 10.0W	Standby: Approx. 0.8W, Off: Approx. 0.5W Printing: Approx. 17.0W	Standby: Approx. 0.8W, Off: Approx. 0.5W Printing: Approx. 17.0W

Standard disclaimers

- All specifications subject to change without notice.
- Borderless 4" x 6" photo lab quality print speed based on Standard driver setting using Canon Photo Paper Plus Glossy (PP-101) media.
- Print speed (ppm) based on Canon standard pattern. Print speed may vary depending on system configuration, interface, software, document complexity, print mode, page coverage, type of paper used and does not take into account data processing time on host computer.
- * Estimated supplemental yield
- Ink yield may vary depending on texts/photos printed, applications software used, print mode and type of paper used.
- All brand and product names are trademarks of their respective companies.
- Microsoft, Windows and the Windows logo are trademarks, or registered trademarks of Microsoft Corporation in the United States and/or other countries.
- For more information on Chromalife100 please visit www.canon-europe.com/chromalife100

Footnotes

- Ink droplets can be placed with a minimum pitch of 1/9600 inch
- Ink droplets can be placed with a minimum pitch of 1/4800 inch
- Photo lab quality print speed based on Standard driver setting using Photo Paper Plus Glossy media (Footnote [3] applies to iX4000, iX5000, Pro9000, Pro9500 only - Disclaimer (b) is not required for these models. Media type = Photo paper Pro for the PIXMA Pro9000 and Photo Paper Plus Semi-gloss for the PIXMA Pro9500)
- Printing ISO/IEC 24712:2006 Colour document. Declared yield value in accordance with ISO/IEC 24711:2006. Values obtained by continuous printing
- Printing Canon standard photos on 4" x 6" on Photo Paper Plus Glossy continuously with the default settings of Photo Paper Plus Glossy using Windows Vista printer driver in borderless printing mode and Windows Vista Home Premium Photo Gallery. Declared yield value determined based on Canon standard method referring to ISO/IEC 24711:2006 (Media type = Photo Paper Pro for the PIXMA Pro9000 and Photo Paper Plus Semi-gloss for the PIXMA Pro9500)

PIXMA Professional Printers Specifications Chart



	PIXMA Pro9500	PIXMA Pro9000
PRINTER FUNCTIONS		
Print Resolution	Up to 4800 x 2400 dpi	Up to 4800 x 2400 dpi
Print Engine	Inkjet 10-ink with minimum 3 pl Micro-Nozzles & FINE print head	Inkjet 8-ink with minimum 2 pl Micro-Nozzles & FINE print head
Photo Lab Quality Speed	A3+; Approx. 239 seconds (Standard) ³	A3+; Approx. 83 seconds (Standard) ³
Mono Print Speed	Up to 9 ppm (Max.), 2.3 ppm (Standard)	Up to 1.6 ppm (Max.), 4.7 ppm (Standard)
Colour Print Speed	Text & Graphics: Up to 8 ppm (Max.), 2.1 ppm (Standard)	Text & Graphics: Up to 15 ppm (Max.), 4.4 ppm (Standard)
Ink Cartridge Configuration	Single Ink technology - 10 separate ink tanks (PGI-9PBK, PGI-9MBK, PGI-9CY, PGI-9C, PGI-9M, PGI-9Y, PGI-9PC, PGI-9PM, PGI-9R, PGI-9G)	Single Ink technology - 8 separate ink tanks (CLI-8BK, CLI-8C, CLI-8M, CLI-8Y, CLI-8PC, CLI-8PM, CLI-8R, CLI-8G)
Ink Cartridge Life	Black: 3325 pages* (PGI-9PBK), 329 pages (PGI-9MBK), Grey: 2905 pages*, Cyan: 2265 pages*, Magenta: 1625 pages*, Yellow: 1315 pages*, Photo Cyan: 720 pages*, Photo Magenta: 720 pages*, Red: 1335 pages*, Green: 2265 pages* ⁴ Black: 525 photos* (PGI-9PBK), 735 photos* (PGI-9MBK), Grey: 228 photos, Cyan: 930 photos*, Magenta: 880 photos*, Yellow: 575 photos*, Photo Cyan: 282 photos, Photo Magenta: 242 photos, Red: 565 photos*, Green: 650 photos* ⁵ * Estimated supplemental yield	Black: 412 pages, Cyan: 640 pages, Magenta: 498 pages, Yellow: 545 pages, Photo Cyan: 5715 pages*, Photo Magenta: 5630 pages*, Red: 5780 pages*, Green: 5845 pages* ⁴ Black: 1290 photos, Cyan: 900 photos, Magenta: 585 photos, Yellow: 272 photos, Photo Cyan: 195 photos, Photo Magenta: 142 photos, Red: 2770 photos*, Green: 2705 photos* ⁵ * Estimated supplemental yield
Media Type	See Media Compatibility Chart on page 117	See Media Compatibility Chart on page 117
Media Input	Sheet Feeder: Max. 150 sheets, Front Feeder: 1 sheet DVD/CD Tray: 1 printable DVD or CD	Sheet Feeder: Max. 150 sheets, Front Feeder: 1 sheet DVD/CD Tray: 1 printable DVD or CD
Media Size	Sheet Feeder: A3+, A3, B4, A4, B5, A5, Letter, Legal, 10" x 12", 8" x 10", 5" x 7", 4" x 6" Front Feeder: 14" x 17" and as above	Sheet Feeder: A3+, A3, B4, A4, B5, A5, Letter, Legal, 10" x 12", 8" x 10", 5" x 7", 4" x 6" Front Feeder: 14" x 17" and as above
Media Weight	Sheet Feeder: 64 to 105 g/m ² and supported Canon special media up to 270 g/m ² Front Feeder: Thickness up to 1.2mm	Sheet Feeder: 64 to 105 g/m ² and supported Canon special media up to 270 g/m ² Front Feeder: Thickness up to 1.2mm
DVD/CD Printing	Available as standard	Available as standard
Two Sided Printing	Available by manual operation only using Super White Paper or plain paper in A3+, A3, A4, B5, A5 & Letter sizes (Windows only)	Available by manual operation only using Super White Paper or plain paper in A3+, A3, A4, B5, A5 & Letter sizes (Windows only)
Borderless Printing	YES (A3+, A3, A4, 14" x 17", 10" x 12", 8" x 10", 5" x 7", & 4" x 6" sizes)	YES (A3+, A3, A4, 14" x 17", 10" x 12", 8" x 10", 5" x 7", & 4" x 6" sizes)
Camera Interface and Connectivity	Direct Print Port: Camera direct photo printing from PictBridge compliant digital cameras & camcorders	Direct Print Port: Camera direct photo printing from PictBridge compliant digital cameras & camcorders
Card Direct Printing	—	—
Card Direct Printing Features	—	—
Card Direct Printing Image Enhancements	—	—
Driver Features	Windows: Photo Optimizer PRO, Image Optimizer, Photo Noise Reduction, Vivid Photo Mac: Photo Optimizer PRO, Photo Noise Reduction, Vivid Photo	Windows: Photo Optimizer PRO, Image Optimizer, Photo Noise Reduction, Vivid Photo Mac: Photo Optimizer PRO, Photo Noise Reduction, Vivid Photo
INTERFACE AND SOFTWARE		
Interface Type - PC	USB 2.0 Hi-Speed ⁶	USB 2.0 Hi-Speed ⁶
Interface Type - Mobile Phone/PDA	Photo printing via PictBridge	Photo printing via PictBridge
Supported Operating System	Windows Vista/Windows XP SP1, SP2/Windows 2000 Professional SP2, SP3, SP4 Mac OS X v.10.2.8 - v.10.4	Windows Vista/Windows XP SP1, SP2/Windows 2000 Professional SP2, SP3, SP4 Mac OS X v.10.2.8 - v.10.4
Minimum System Requirements	Windows Vista, XP, 2000 Professional / Internet Explorer 6.0 / Pentium® II 300 MHz including compatible processors / 256 MB RAM / 500 MB Hard disk space / CD-ROM drive / Display SVGA 800 x 600 Mac OS X v.10.4 / Safari / Intel® processor, PowerPC G4 / 256 MB RAM / 250 MB Hard disk space / CD-ROM drive / Display SVGA 800 x 600 Mac OS X v.10.2.8 - v.10.3 / Safari / PowerPC G4 / 256 MB RAM / 250 MB Hard disk space / CD-ROM drive / Display SVGA 800 x 600	Windows Vista, XP, 2000 Professional / Internet Explorer 5.0 / Pentium® II 300 MHz including compatible processors ¹⁰ / 128 MB RAM / 200 MB Hard disk space / CD-ROM drive / Display 800 x 600, Colour 16 bit Mac OS X v.10.4 / Safari / Intel® processor, PowerPC G3 / 256 MB RAM / 250 MB Hard disk space / CD-ROM drive / Display 800 x 600, Thousands Colours Mac OS X v.10.2.8 - v.10.3 / Safari / PowerPC G3 / 128 MB RAM / 200 MB Hard disk space / CD-ROM drive / Display 800 x 600, Thousands Colours
Software Included	Windows: Easy-PhotoPrint Pro, Easy-PhotoPrint, Easy-LayoutPrint, CD-LabelPrint Mac: Easy-PhotoPrint Pro, Easy-PhotoPrint, Easy-LayoutPrint, CD-LabelPrint	Windows: Easy-PhotoPrint Pro, Easy-PhotoPrint, Easy-WebPrint (Windows XP/2000 with Internet Explorer 5.0-6.x), CD-LabelPrint, PhotoRecord (Windows XP/2000) Mac: Easy-PhotoPrint Pro, Easy-PhotoPrint, CD-LabelPrint
GENERAL FEATURES		
Dimensions (W x D x H)	660 x 354 x 191mm	660 x 354 x 191mm
LCD Screen	—	—
Number of Language (LCD)	—	—
Temperature Range	Operating environment: 5° - 35°C	Operating environment: 5° - 35°C
Humidity	Operating humidity: 10 - 90%RH (no condensation)	Operating humidity: 10 - 90%RH (no condensation)
Acoustic Noise Levels	Printing: Approx. 34dB(A) in best quality mode	Printing: Approx. 39dB(A) in best quality mode
Weight	Approx. 14.8kg	Approx. 14.0kg
Power Source	AC 100 - 240V, 50/60Hz	AC 100 - 240V, 50/60Hz
Power Consumption	Standby: Approx. 1.8W, Off: Approx. 1.0W Printing: Approx. 20.0W	Standby: Approx. 1.8W, Off: Approx. 1.0W Printing: Approx. 20.0W

6. Using recommended adapter - not supplied

7. Document copy speed is based on copying the manuscript "ISO/IEC 24712:2006 - Newsletter" (digital data printed by offset) using default settings on plain paper. 4" x 6" borderless photo copy speed is based on copying the photo "ISO/JIS-SCID N2" (digital data printed by inkjet printer) using default settings on 4" x 6" Photo Paper Plus Glossy

8. Operation can only be guaranteed on a PC with built-in USB or USB 2.0 Hi-Speed Port and pre-installed Windows Vista, Windows XP, Windows 2000, Windows Me or Windows 98

9. PCs with Windows XP Service Pack 1 or later with Microsoft "Support for Bluetooth® Wireless Devices", or Toshiba Windows XP computers with Bluetooth® Settings Version 3.00.10 or later (HCRP only). Mac OS X v10.3.3 or later. Compatible Devices: PC, PDA, Mobile phone and any other Bluetooth® enabled device (Bluetooth® operation depends on the devices and software version used.)

10. Pentium® III including compatible processors (Celeron® 566 MHz), Windows 2000 Professional SP4 / Power PC G4 (Intel processor) is required for USB 2.0 Hi-Speed performance

11. When copying ISO/JIS-SCID N2 pattern on A4 size plain paper in Standard mode

12. When printing ISO/JIS-SCID N2 pattern bordered on A4 plain paper with the default settings





Service Support

Canon doesn't stop at developing great products, we deliver outstanding after-sales service too. Customers can have complete confidence in their Canon technology with the following benefits;

Helpful, professional Customer Service Advisors

Our team are trained specifically to support Canon products over the phone in order to resolve customers enquiries quickly and efficiently. Customers can call our customer services Helpline on 08705 143723. Lines are open during normal working hours (9am – 5.30pm) and all calls are charged at standard National rates.

Qualified technicians

All technicians receive ongoing product training and are equipped with the tools and resources to provide a first class service.

Original Components

Canon only uses genuine spare parts and components in repairs. This ensures high product performance and protects the product warranty.

Visit www.canon.co.uk for more information.

Canon UK Ltd

Woodhatch
Reigate
Surrey
RH2 8BF
08705 143723
www.canon.co.uk

Canon (Irl) Business Equipment Ltd

Arena Road
Sandyford Industrial Estate
Dublin 18
Ireland
www.canon.ie

Not all products and services are available in all markets. All company and/or product names are trademarks and/or registered trademarks of their respective manufacturers in their markets and/or countries.

All trademarks are acknowledged. All data is based on Canon's standard testing and measuring methods.
Errors and omissions excepted.

Canon reserves the right to change specifications and physical appearance without notice.

All LCD images and print outs shown are simulated for clarity of reproduction.

you can
Canon

Canon Inc.
www.canon.com

Canon Europa NV
www.canon-europe.com

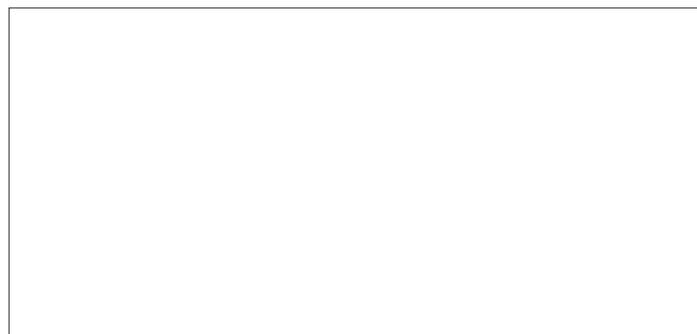
Canon UK Ltd
www.canon.co.uk

Canon (Irl) Business Equipment Ltd
www.canon.ie

Find the perfect fit with **Careers@Canon**
www.canon-europe.com/about_us/careers/



© 1986 Panda symbol WWF © WWF Registered Trademark



We Speak Image