



# iFP Series intelligent UPS

A Great Partner for Small Equipment



Laptop



Router



Security  
Systems



Voip Phone  
Systems



Surveillance  
Systems

## What's new

- Touch LCD Display Panel
- USB communication port
- RJ11/RJ45 connector that provides surge protection
- Multinational power sockets (Europe, U.S., India, China, as well as IDC-dedicated and multinational universal sockets)

## Product Features

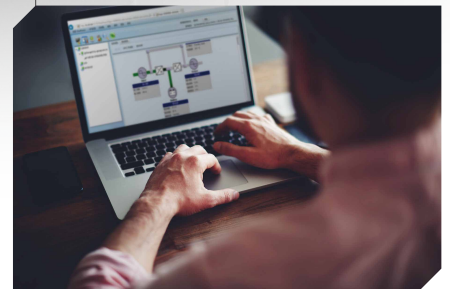
- Compact size
- Excellent microprocessor control guarantees high reliability
- Boost and buck AVR for voltage stabilization
- Auto restart while AC is recovering
- Provides simulated sine wave backup power to protect electrical equipment
- Off-mode charging
- Cold start function
- Generator compatible

The iFP series is equipped with automatic voltage regulation to reduce the impact of unstable voltage on equipment. The intelligent UPS' functions can also provide power during outages, and the battery automatically charges when power is restored. FSP's intelligent UPS can provide equipment with an uninterrupted supply of power at any time.

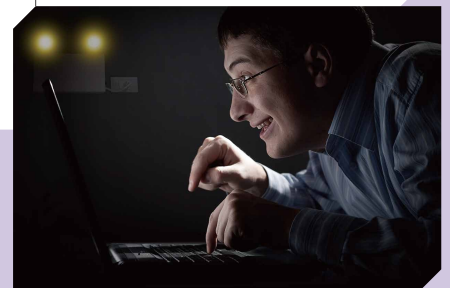


ESB

iFP can be monitored by computer software.



FSP UPS provides back up battery power so you can work through short and medium length power outages.



# Line Interactive | iFP

## 600/800/1000/1500/2000

### Features

- Compact size
- Excellent microprocessor control guarantees high reliability
- Boost and buck AVR for voltage stabilization
- Auto restart while AC is recovering
- Simulated sine wave
- Off-mode charging
- Cold start function
- RJ11 surge protection for 600/800 model
- RJ45 surge protection for 1000/1500/2000 model
- Built-in USB communication port
- Touch screen LCD to display UPS information circularly



MODEL	iFP 600	iFP 800	iFP 1000	iFP 1500	iFP 2000
<b>CAPACITY</b>	600VA / 360W	800VA / 480W	1000VA / 600W	1500VA / 900W	2000VA / 1200W
<b>INPUT</b>					
Voltage	220 / 230 / 240Vac				
Voltage Range	140-290Vac				
Frequency Range	60 / 50Hz (auto sensing)				
<b>OUTPUT</b>					
Voltage	110 / 120Vac or 220 / 230 / 240Vac				
AC Voltage Regulation (Batt. Mode)	±10%				
Frequency Range (Batt. Mode)	60Hz or 50Hz ± 1Hz				
Transfer Time	Typical 2-6 ms				
Waveform (Batt. Mode)	Simulated Sinewave				
<b>BATTERY</b>					
Battery Type & Number	12V / 7Ah x 1	12V / 9Ah x 1	12V / 7Ah x 2	12V / 9Ah x 2	12V / 9Ah x 2
Typical Recharge Time	4 hours recover to 90% capacity		4-6 hours recover to 90% capacity		
<b>INDICATORS</b>					
LCD Display	Digital information				
<b>ALARM</b>					
Battery Mode	Beeps every 10 seconds				
Low Battery	Beeps every second				
Overload	Beeps every 0.5 seconds				
Fault	Continuously beeping				
<b>PROTECTION</b>					
Full Protection	Overload, discharge and overcharge protection				
<b>PHYSICAL</b>					
Dimension, D x W x H (mm)	300 x 101 x 142			320 x 130 x 182	
Net Weight (kgs)	4.25	4.9	8.2	10.4	11
<b>ENVIRONMENT</b>					
Humidity	0-90% RH @ 0- 40°C (non-condensing)				
Noise Level	Less than 40dB				
<b>BACKUP TIME</b>					
Battery Config.	7.0Ah x 1	9.0Ah x 1	7.0Ah x 2	9.0Ah x 2	9.0Ah x 2
Backup time	19 mins	20 mins	18 mins	18 mins	15 mins
Load Condition	Mac book 15" (90W)*1	Mac book 13" (60W)*2	Mac book 13" (60W)*1 Mac book 15" (90W)*1	Mac book 13" (60W)*2 Mac book 15" (90W)*1	Mac book 13" (60W)*2 Mac book 15" (90W)*2

\* Product specifications are subject to change without further notice