

# Network Display Adapter SX-ND4050G

HD-ready

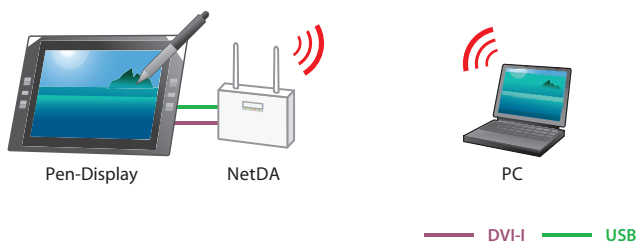


Use monitors, keyboard and mouse via LAN or 300Mbit WLAN

## Remote control and interactive use of displays

### Overview

The SX-ND4050G is a network display adapter (NetDA) with full HD support for fast data transfer using the IEEE 802.11n and Gigabit Ethernet standards. This permits not only the presentation of a PC display on a remote monitor using wired or wireless transmission, but also uses integration with USB devices to permit changes to be made to the display remotely. Thanks to wireless transmission, the cable spaghetti in the vicinity of the display can be eliminated and the display can be positioned however you like.



### Main features

#### 1 Problem-free operation even through WLAN

Thanks to the high transmission rates of up to 300 Mbps (theoretical value) on IEEE 802.11n, the tablet PC responds immediately to pen input and can provide satisfactory performance even for moving pictures. The SX-ND4050G can be configured as a wireless Access Point and builds a complete independent wireless LAN network. That means that resources of the existing wireless network are not occupied and the investment for further hardware equipment is minimized.

#### 2 Bidirectional data transfer with various USB devices

Thanks to the USB Virtual Link technology by silex, various input devices such as touch panels or USB devices can be remotely controlled through the network by the PC.

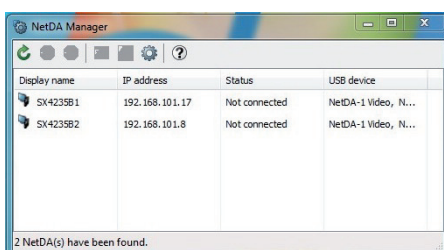
#### 3 Support for Full HD

Support for the maximum Full HD resolution (1920 x 1080) permits the display of high picture quality.



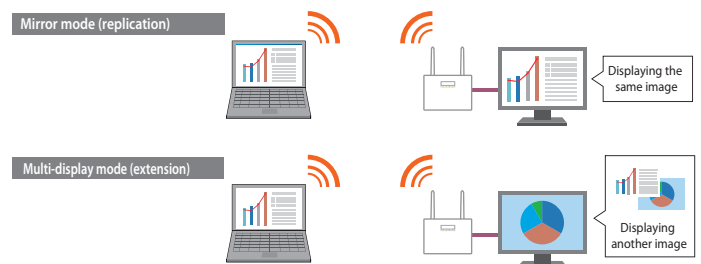
#### 4 "NetDA Manager", a simple and user-friendly utility

This special software allows you to search for NetDA devices, connect to and disconnect from monitors and query connection status.



#### 5 Mirror mode (replication) and multi-display mode (extension)

Two modes are available as needed: A mirror mode that displays the same picture as that on the PC, and a multi-display mode that shows another image as an extension to the PC display.

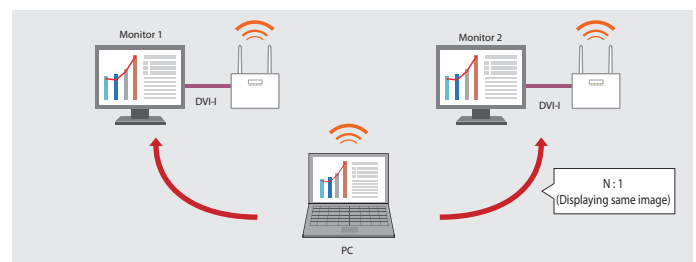


### System configuration examples

#### 1 Multiple monitors: 1 PC

- Up to 6 monitors can be connected to a single PC.
- This is practical at conferences, for example, that are distributed between different conference rooms, where the same picture can be displayed everywhere.

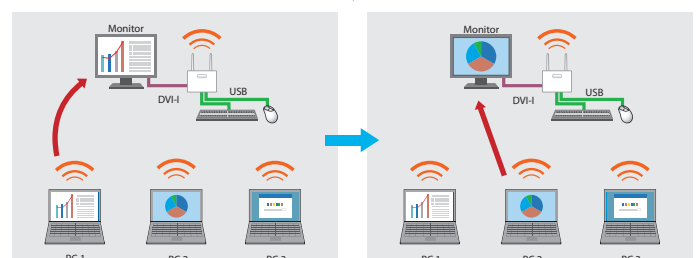
\* Under Windows 7, mirror mode only permits display on one monitor



#### 2 1 monitor: Multiple PCs

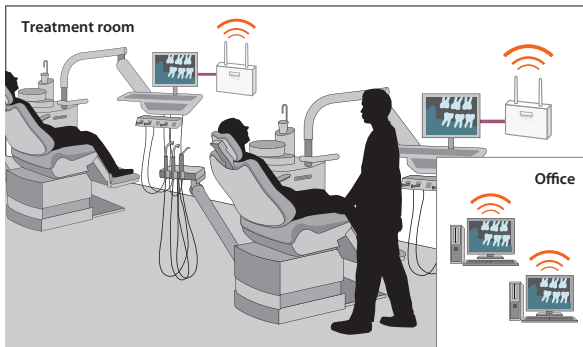
- The PC on which the display appears or should be operated can be selected by the keyboard at the monitor.
- You can switch between a maximum of 12 PCs.

1 : N (Alternating display between PCs 1, 2 and 3)



Application options

case 1  
dentist's practice



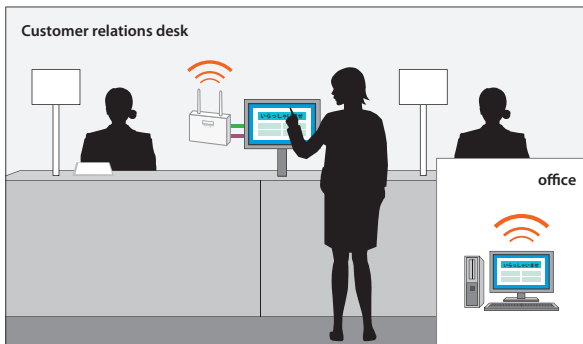
The monitor next to the treatment chain is wirelessly connected to the PC in the office, so that patient files and X-rays can be called up there. This means that there is no need to set up a PC next to each treatment chair, which has a positive effect on the room design.

case 2  
At school



A wireless connection instead of cables next to the teacher's podium allows the whiteboard to be moved around the room without restriction, making it easier both to put away and to set it up.

case 3  
customer relations desk



Setting up the PC in another room allows better privacy; the different requests and so forth are processed over the network. — DVI-I — USB

Accessory options for the network display adapter

Mounting bracket



Stand



\* The stand is only available in black.  
\* Please contact us for details about optional accessories (mounting bracket, stand).

Technical data

Product name	SX-ND4050G
Item number	E1233
Wired LAN	10 BASE-T/100 BASE-TX/1000 BASE-T (automatic detection)
Wireless LAN (WLAN)	IEEE 802.11 a/b/g/n With our WLAN module with PCI Express support (SX-PCEAN)
WLAN security	WEP(64/128), WPA-PSK(TKIP/AES), WPA2-PSK(AES)
Interfaces	RJ-45 USB 2.0 Hi-Speed-(Typ A)-Port x 2 DVI-I output Line Out (3,5 mm stereo mini jack) Mic In (3,5 mm mono)
Supported protocols	TCP/IP
Operating systems supported	Windows 7 (32/64 Bit) * Windows XP SP2, Windows Vista SP1 or higher (32/64 Bit)
Display functions	Maximum resolution - Full HD (1920 x 1080) Special functions: - Display modes: Mirror mode and multi-display mode - Monitor image can be rotated by 90°, 180° or 270°
Other functions	USB isochronous transfer, bundled device connection, USB filtering, remote PC function
LED	CONNECT, ALERT, STATUS, LINK
Setup switch	OSD display (settings display)
Configuration	Webbrowser
Associated service programs	NetDA Manager / SX-Virtual Link
Storage conditions	Temperature: -10° C to 50° C Humidity: 20% to 90% RH (non condensation)
Betriebsbedingungen	Temperature: 0° C to 40° C Humidity: 20% to 80% RH (non condensation)
Approvals	VCCI Class A, CE
Dimensions	B: 155 mm x D: 32 mm x H: 120 mm (without antenna, rubber feet and optional accessories)
Weight	260 g (without rubber feet and optional accessories)
Power supply	100-240 V AC, 50/60 Hz
Maximum power consumption	24W (DC12V 2,0 A)
Contents of package	Main unit, power supply, rubber feet (4 pcs.), CD-ROM, setup instructions, antennas (2 pcs.), GPL notification, guarantee card

[ Minimum system requirements ]

<Windows XP SP2/SP3 32bit >

Recommended: CPU with at least 2.0 GHz, at least 1.0 GB RAM  
Minimum requirements: CPU with at least 1,2 GHz, at least 512 MB RAM (when displaying static images)

<Windows Vista SP1/SP2 32/64bit, Windows 7 32/64bit >

Under 1280 x 1024: WEI > 3; 1366 x 768: WEI > 3.5; 1920 x 1080: WEI > 4  
(WEI = Windows Experience Index)

[ When using the product, note the following ]

\* Under Windows 7, mirror mode only permits display on one monitor  
-The product does not support API interfaces such as DirectX or OpenGL.  
-The product is not suitable for PCs connected to multiple display adapters.

OEM circuit boards for integration into a display and SDK solutions are also available.  
Please contact us for details.

Network Display Adapter



SX-ND4050G

About silex

Since 2000, silex technology europe GmbH has been a subsidiary of the Japanese company silex technology, Inc. The parent company in Japan has been involved in development and production since 1973. Thus silex technology can look back on nearly 40 years of experience and quality work. In addition to the central company headquarters in Kyoto, there are locations in Tokyo, the USA, China and Europe.

Today, the silex group is not only a world market leader in integrated network printing technology, but also a leading supplier of connectivity in the areas of USB, serial and WLAN. Many well-known manufacturers of computer peripherals rely on the technologies of silex technology and use them as OEM suppliers for their own products.

Their product line includes print, USB and serial device servers, as well as modular WLAN solutions. In addition to mature technologies and quality products, the company also offers a complete ranges of services, such as lifetime free support by telephone, email or remote access for all customers.

silex technology is a registered trademark of silex technology, Inc. Other products or trade names are the registered trademarks of their owners. Changes to technical specifications and data may be made with no prior notice. © 2012 silex technology europe GmbH. All rights retained.



JQA-QMA2667  
silex technology, Inc.



JQA-QMA313  
silex technology, Inc.  
Design & Manufaktur Center



Global marketing and support locations:

Europe  
silex technology europe GmbH  
+49-2151-65009-10  
Toll-free hotline in Germany:  
0800-7453938  
www.silexeurope.com  
> contact@silexeurope.com

Japan  
silex technology, Inc.  
+81-774-98-3782  
www.silex.jp  
> support@silex.jp

USA  
silex technology america, Inc.  
+1-801-747-0656  
Kostenfreie Hotline USA:  
866-765-8761  
www.silexamerica.com  
> contact@silexamerica.com